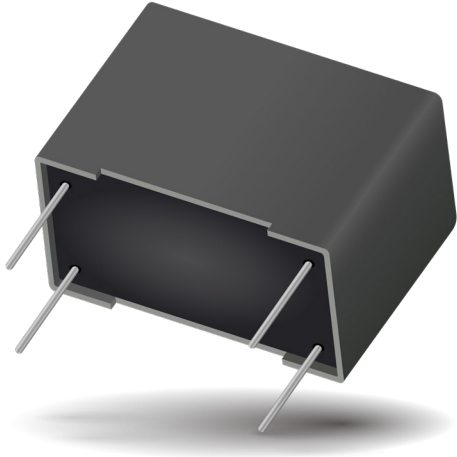
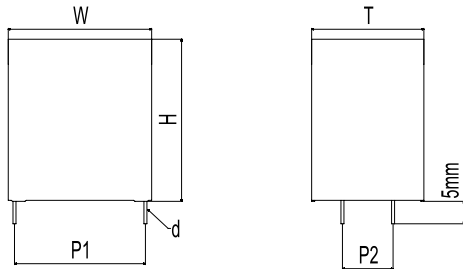


DC FILTERING

FE* RoHS Compliant



DIMENSIONS



STANDARDS

- IEC 61071-1: Power electronic capacitors
- IEC 61071-2: Power electronic capacitors
- IEC 60384-16: Fixed metallized polypropylene film dielectric DC capacitors
- IEC 60384-16-1: Fixed metallized polypropylene film dielectric DC capacitors Assessment level E
- IEC 60384-17: Fixed metallized polypropylene film dielectric AC and pulse capacitors
- IEC 60384-17-1: Fixed metallized polypropylene film dielectric AC and pulse capacitors
- EN CZDS2.E514026 Certificate: E514026 (approved by UL)

HOW TO ORDER

FE	27	G*	6	K	0685	K	A
Series FE	Pitch 27 = 27.5mm 37 = 37.5mm 52 = 52.5mm	Case Size E* for P=27.5mm F* for P=37.5mm G* for P=52.5mm	Type 6 = Polypropylene 7 = Polypropylene THB 8 = Polypropylene Low Profile	Voltage I = 450V H = 500V J = 550V Q = 600V A = 700V B = 800V C = 900V K = 1000V L = 1100V	Cap µF Code	Tolerance J = ± 5% K = ±10%	Pitch P2 A = 10.2 B = 20.3
Архангельск (8182)63-90-72 Астана (7172)727-132 Астрахань (8512)99-46-04 Барнаул (3852)73-04-60 Белгород (4722)40-23-64 Брянск (4832)59-03-52 Владивосток (423)249-28-31 Волгоград (844)278-03-48 Вологда (8172)26-41-59 Воронеж (473)204-51-73 Екатеринбург (343)384-55-89 Иваново (4932)77-34-06	Ижевск (3412)26-03-58 Иркутск (395)279-98-46 Казань (843)206-01-48 Калининград (4012)72-03-81 Калуга (4842)92-23-67 Кемерово (3842)65-04-62 Киров (8332)68-02-04 Краснодар (861)203-40-90 Красноярск (391)204-63-61 Курск (4712)77-13-04 Липецк (4742)52-20-81 Киргизия (996)312-96-26-47	Магнитогорск (3519)55-03-13 Москва (495)268-04-70 Мурманск (8152)59-64-93 Набережные Челны (8552)20-53-41 Нижний Новгород (831)429-08-12 Новокузнецк (3843)20-46-81 Новосибирск (383)227-86-73 Омск (3812)21-46-40 Орел (4862)44-53-42 Оренбург (3532)37-68-04 Пенза (8412)22-31-16 Россия (495)268-04-70	Пермь (342)205-81-47 Ростов-на-Дону (863)308-18-15 Рязань (4912)46-61-64 Самара (846)206-03-16 Санкт-Петербург (812)309-46-40 Саратов (845)249-38-78 Севастополь (8692)22-31-93 Симферополь (3652)67-13-56 Смоленск (4812)29-41-54 Сочи (862)225-72-31 Ставрополь (8652)20-65-13 Казахстан (772)734-952-31	Сургут (3462)77-98-35 Тверь (4822)63-31-35 Томск (3822)98-41-53 Тула (4872)74-02-29 Тюмень (3452)66-21-18 Ульяновск (8422)24-23-59 Уфа (347)229-48-12 Хабаровск (4212)92-98-04 Челябинск (351)202-03-61 Череповец (8202)49-02-64 Ярославль (4852)69-52-93			

GENERAL DESCRIPTION

The FE series uses a non-impregnated metallized polypropylene dielectric specially treated to have a very high dielectric strength in operation condition up to 105°C.

FE series performance characteristics make them a viable alternative to aluminum electrolytic technology due to much lower ESR and much higher surge voltage capability (dv/dt).

GENERAL CHARACTERISTICS

- Able to Withstand Harsh Environment Conditions
- Low Profile Available

FEATURES & BENEFITS

- High Performance DC Filter
- Low ESR, High Peak & RMS Current
- THB Compliance
- Able to Withstand Harsh Environment Conditions (THB Compliance)
- Low Profile Available

APPLICATIONS

- Renewable Energy Inverter
- OBC & Automotive Applications
- Motor Drives
- Industrial Power Supply
- UPS System

OPERATING TEMPERATURE RANGE

- Operating temperature range: -40°C to +100°C

PACKAGING MATERIAL

Self-extinguishing plastic case (V0 = in accordance with UL 94) filled thermosetting resin.

Self-extinguishing thermosetting resin (V0 = in accordance with UL 94; I3F2 = in accordance with NF F 16-101).

LIFE EXPECTANCY

One unique feature of this technology (versus aluminum electrolytics) is how the capacitor reacts at the end of its lifetime.

Unlike aluminum electrolytic film capacitors do not have a catastrophic failure mode. Film capacitors simply experience a parametric loss of capacitance of about 2% from initial value, with no risk of short circuit.

The capacitor continues to be functional even after this 2% decrease.

DC FILTERING

FE* RoHS Compliant

POLYPROPYLENE DIELECTRIC FOR INDUSTRIAL DC FILTERING

These capacitors have been designed primarily for high and medium power DC filtering applications.

ELECTRICAL CHARACTERISTICS – POLYPROPYLENE DIELECTRIC

Items	Characteristics
Application	DC Filtering / DC Link
Reference Standard	IEC 61071
Climatic Category	40/85/56 IEC 60068-1
Operating Temperature Range	-40~ +105°C (+85°C observing voltage must be de-rating at 1.35% per °C)
Upper Temperature Tmax	+85°C
Lower Temperature Tmin	-40°C
Rated Voltage	450Vdc ~ 1200Vdc
Capacitance Range	5µF ~ 1500µF
Capacitance Tolerance	±5% or ±10% at +25°C
Dissipation Factor (DF)	≤ 0.002 (0.20%) at 1 KHz. C≤20µF at +25°C
	≤ 0.003 (0.30%) at 1 KHz. C>20µF at +25°C
Test Voltage Between Terminals	1.5 x rated voltage for 10s (terminal to terminal)
Test Voltage Terminal to Case	3.0kVrms 50 Hz for 10 sec at +25°C
Insulation Resistance	IR x C≥30,000 Seconds at 100VDC 1 minute at +25°C
Life Expectancy	100,000 hours at Un @ Hot-Spot temperature T=+70°C
Protection	Solvent resistant plastic case UL94 V-0
	Thermosetting resin sealing UL 94 V-0 compliant
Installation	Any position
Leads	Tinned copper wires, standard lead wire length 5 ±1mm
Packaging	Packed in cardboard boxes with protection for the terminals
RoHS Compliant	Compliant with the restricted substance requirements of Directive 2011/65/EU
Storage Conditions	Storage time: ≤ 24 months from the date marked on the label package
	Temperature and relative humidity should be -10°C ~ +40°C and not more than 75%RH.
	RH ≤ 85% for 30 days randomly distributed throughout the year
Humidity Test	Test conditions & performance:
	Temperature: +40°C±2°C Relative humidity (RH): 93% ±2%
	Test duration: 56 days
	Capacitance change: ≤±5% DF change (Δtgδ): ≤50 X 10-4 at 1KHz Insulation resistance: ≥50% of initial limit
Endurance Test	Test conditions & performance:
	Temperature: +85°C±2°C Voltage applied: 1.3 X VR (d.c.)
	Test duration: 1000 hours
	Capacitance change: ≤±5% DF change (Δ tgδ): ≤50 X 10-4 at 1KHz Insulation resistance: ≥50% of initial limit

DC FILTERING

FE - Standard *RoHS Compliant

CASE CODE

mm

Case Code	Dimensions					
	W ± 0.50	H ± 0.50	T ± 0.50	P1 ± 1.00	P2 ± 1.00	d ± 0.05
	mm	mm	mm	mm	mm	mm
FI	42.5	33.5	22.0	37.5	10.2	1.2
F4	42.5	36.0	19.0	37.5	10.2	1.2
FK	42.5	37.0	22.0	37.5	10.2	1.2
FL	42.5	37.0	28.0	37.5	10.2	1.2
F5	42.5	38.0	20.0	37.5	10.2	1.2
F6	42.5	40.0	20.0	37.5	10.2	1.2
F8	42.5	44.0	24.0	37.5	10.2	1.2
F9	42.5	45.0	30.0	37.5	20.3	1.2
FN	42.5	50.0	35.0	37.5	20.3	1.2
FP	42.5	57.0	30.0	37.5	20.3	1.2
G6	57.5	22.0	43.0	52.5	20.3	1.2
G9	57.5	45.0	25.0	52.5	10.2	1.2
GA	57.5	45.0	30.0	37.5	20.3	1.2
GB	57.5	45.0	45.0	52.5	20.3	1.2
GC	57.5	50.0	35.0	52.5	20.3	1.2
GD	57.5	53.0	50.0	52.5	20.3	1.2
GE	57.5	55.0	45.0	52.5	20.3	1.2
GF	57.5	60.0	35.0	52.5	20.3	1.2
GG	57.5	65.0	130.0	52.5	20.3	1.2
GH	57.5	65.0	35.0	52.5	20.3	1.2
GI	57.5	65.0	45.0	52.5	20.3	1.2
GJ	57.5	65.0	70.0	52.5	20.3	1.2
GK	57.5	70.0	35.0	52.5	20.3	1.2
GL	57.5	80.0	35.0	52.5	20.3	1.2

RATING & PART NUMBER REFERENCE

Cap uF	Rated Voltage V	PN	Voltage Code	Case Code	Dimensions						dv/dt V/us	Peak Current A	Irms A	ESR 10KHz mΩ	Rth °C/W	ESL nH	SPQ pcs
					W ± 0.5	H ± 0.5	T ± 0.5	P1 ± 1.0	P2 ± 1.0	d ± 0.05							
					mm	mm	mm	mm	mm	mm							
					Voltage Vndc 450V						Voltage Code I						
25.0	450	FE37FK6I0256*A	I	FK	42.5	37.0	22.0	37.5	10.2	1.2	35	875	12.5	5.5	17.5	30	49
30.0	450	FE37F66I0306*A	I	F6	42.5	40.0	20.0	37.5	10.2	1.2	35	1050	12.0	6.0	17.4	30	56
40.0	450	FE37FL6I0406*A	I	FL	42.5	37.0	28.0	37.5	10.2	1.2	35	1400	14.0	5.5	13.9	30	42
40.0	450	FE37F86I0406*A	I	F8	42.5	44.0	24.0	37.5	10.2	1.2	35	1400	15.0	5.2	12.8	30	49
50.0	450	FE37F96I0506*B	I	F9	42.5	45.0	30.0	37.5	20.3	1.2	35	1750	15.0	4.0	16.7	30	35
60.0	450	FE37F96I0606*B	I	F9	42.5	45.0	30.0	37.5	20.3	1.2	35	2100	16.5	4.0	13.8	30	35
40.0	450	FE52G66I0406*B	I	G6	57.5	22.0	43.0	52.5	20.3	1.2	35	1400	12.0	8.0	13.0	35	15
50.0	450	FE52G66I0506*B	I	G6	57.5	22.0	43.0	52.5	20.3	1.2	35	1750	14.0	6.5	11.8	35	15
55.0	450	FE37GA6I0556*B	I	GA	57.5	45.0	30.0	37.5	20.3	1.2	35	1925	15.5	5.0	12.5	35	25
60.0	450	FE37GA6I0606*B	I	GA	57.5	45.0	30.0	37.5	20.3	1.2	35	2100	16.5	4.5	12.2	35	25
80.0	450	FE52GA6I0806*B	I	GA	57.5	45.0	30.0	52.5	20.3	1.2	20	1600	16.0	4.0	14.6	35	25
100.0	450	FE52GC6I0107*B	I	GC	57.5	50.0	35.0	52.5	20.3	1.2	20	2000	18.0	3.8	12.2	35	20
130.0	450	FE52GF6I0137*B	I	GF	57.5	60.0	35.0	52.5	20.3	1.2	20	2600	22.0	3.5	8.9	35	20
140.0	450	FE52GH6I0147*B	I	GH	57.5	65.0	35.0	52.5	20.3	1.2	20	2800	24.0	3.4	7.7	35	20
150.0	450	FE52GK6I0157*B	I	GK	57.5	70.0	35.0	52.5	20.3	1.2	20	3000	26.0	3.2	6.9	35	20
160.0	450	FE52GL6I0167*B	I	GL	57.5	80.0	35.0	52.5	20.3	1.2	20	3200	28.0	3.1	6.2	35	20
170.0	450	FE52GL6I0177*B	I	GL	57.5	80.0	35.0	52.5	20.3	1.2	20	3400	30.0	3.0	5.6	35	20
					Voltage Vndc 500V						Voltage Code H						
20.0	500	FE37F46H0206*B	H	F4	42.5	36.0	19.0	37.5	20.3	1.2	20	400	9.0	8.0	23.1	30	56
22.0	500	FE37F56H0226*B	H	F5	42.5	38.0	20.0	37.5	20.3	1.2	20	440	10.0	7.0	21.4	30	56
25.0	500	FE37F56H0256*B	H	F5	42.5	38.0	20.0	37.5	20.3	1.2	20	500	10.0	6.0	25.0	30	56
30.0	500	FE37F86H0306*B	H	F8	42.5	44.0	24.0	37.5	20.3	1.2	20	600	13.0	5.0	17.8	30	49
35.0	500	FE37F86H0356*B	H	F8	42.5	44.0	24.0	37.5	20.3	1.2	20	700	14.0	4.5	17.0	30	49

DC FILTERING

FE - Standard *RoHS Compliant

RATING & PART NUMBER REFERENCE

Cap	Rated Voltage	PN	Voltage Code	Case Code	Dimensions						dv/dt	Peak Current	I _{rms}	ESR 10KHz	R _{th}	ESL	SPQ
					W	H	T	P1	P2	d							
					± 0.5	± 0.5	± 0.5	± 1.0	± 1.0	± 0.05							
µF	V				mm	mm	mm	mm	mm	mm	V/us	A	A	mΩ	°C/W	nH	pcs
40.0	500	FE37F96H0406*B	H	F9	42.5	45.0	30.0	37.5	20.3	1.2	20	800	15.0	4.0	16.7	30	35
45.0	500	FE37F96H0456*B	H	F9	42.5	45.0	30.0	37.5	20.3	1.2	20	900	16.0	3.5	16.7	30	35
50.0	500	FE37F96H0506*B	H	F9	42.5	45.0	30.0	37.5	20.3	1.2	20	1000	17.0	3.0	17.3	30	35
55.0	500	FE37FP6H0556*B	H	FP	42.5	57.0	30.0	37.5	20.3	1.2	20	1100	18.0	3.0	15.4	30	35
60.0	500	FE37FP6H0606*B	H	FP	42.5	57.0	30.0	37.5	20.3	1.2	20	1200	18.0	3.0	15.4	30	35
65.0	500	FE37FP6H0656*B	H	FP	42.5	57.0	30.0	37.5	20.3	1.2	20	1300	19.0	2.0	20.8	30	35
50.0	500	FE52G96H0506*B	H	G9	57.5	45.0	25.0	52.5	10.2	1.2	10	500	11.0	6.0	20.7	35	30
55.0	500	FE52G96H0556*B	H	G9	57.5	45.0	25.0	52.5	10.2	1.2	10	550	13.0	6.0	14.8	35	30
60.0	500	FE52GA6H0606*B	H	GA	57.5	45.0	30.0	52.5	20.3	1.2	10	600	14.0	5.0	15.3	35	25
65.0	500	FE52GA6H0656*B	H	GA	57.5	45.0	30.0	52.5	20.3	1.2	10	650	14.0	5.0	15.3	35	25
70.0	500	FE52GA6H0706*B	H	GA	57.5	45.0	30.0	52.5	20.3	1.2	10	700	15.0	5.0	13.3	35	25
75.0	500	FE52GC6H0756*B	H	GC	57.5	50.0	35.0	52.5	20.3	1.2	10	750	16.0	4.0	14.6	35	20
80.0	500	FE52GC6H0806*B	H	GC	57.5	50.0	35.0	52.5	20.3	1.2	10	800	17.0	3.0	17.3	35	20
90.0	500	FE52GC6H0906*B	H	GC	57.5	50.0	35.0	52.5	20.3	1.2	10	900	18.0	3.0	15.4	35	20
100.0	500	FE52GC6H0107*B	H	GC	57.5	50.0	35.0	52.5	20.3	1.2	10	1000	19.0	3.0	13.9	35	20
110.0	500	FE52GB6H0117*B	H	GB	57.5	45.0	45.0	52.5	20.3	1.2	10	1100	19.0	2.5	16.6	35	15
120.0	500	FE52GB6H0127*B	H	GB	57.5	45.0	45.0	52.5	20.3	1.2	10	1200	19.0	2.5	16.6	35	15
250.0	500	FE52GJ6H0257*B	H	GJ	57.5	65.0	70.0	52.5	20.3	1.2	4	1000	25.0	2.0	12.0	35	10
500.0	500	FE52GG6H0507*B	H	GG	57.5	65.0	130.0	52.5	20.3	1.2	2	1000	45.0	1.5	4.9	35	5
					Voltage Vndc 550V				Voltage Code J								
20.0	550	FE37F66J0206*A	J	F6	42.5	40.0	20.0	37.5	10.2	1.2	35	700	12.5	6.5	14.8	30	56
22.0	550	FE37F66J0226*A	J	F6	42.5	40.0	20.0	37.5	10.2	1.2	35	770	13.5	6.5	12.7	30	56
25.0	550	FE37F66J0256*A	J	F6	42.5	40.0	20.0	37.5	10.2	1.2	35	875	14.5	6.5	11.0	30	56
30.0	550	FE37F86J0306*A	J	F8	42.5	44.0	24.0	37.5	10.2	1.2	35	1050	16.0	6.0	9.8	30	49
35.0	550	FE37F96J0356*B	J	F9	42.5	45.0	30.0	37.5	20.3	1.2	35	1225	18.0	6.0	7.7	30	35
40.0	550	FE37F96J0406*B	J	F9	42.5	45.0	30.0	37.5	20.3	1.2	35	1400	18.0	5.5	8.4	30	35
50.0	550	FE37FN6J0506*B	J	FN	42.5	50.0	35.0	37.5	20.3	1.2	35	1750	20.0	5.0	7.5	30	28
40.0	550	FE57G66J0406*B	J	G6	57.5	22.0	43.0	57.5	20.3	1.2	35	1400	16.0	5.8	10.1	35	15
60.0	550	FE37GA6J0606*B	J	GA	57.5	45.0	30.0	37.5	20.3	1.2	20	1200	18.0	4.8	9.6	35	25
75.0	550	FE52GC6J0756*B	J	GC	57.5	50.0	35.0	52.5	20.3	1.2	20	1500	20.0	5.0	7.5	35	20
100.0	550	FE52GE6J0107*B	J	GE	57.5	55.0	45.0	52.5	20.3	1.2	20	2000	24.0	4.5	5.8	35	15
110.0	550	FE52GE6J0117*B	J	GE	57.5	55.0	45.0	52.5	20.3	1.2	20	2200	26.0	4.0	5.5	35	15
130.0	550	FE52GF6J0137*B	J	GF	57.5	60.0	35.0	52.5	20.3	1.2	20	2600	23.0	3.4	8.3	35	20
140.0	550	FE52GH6J0147*B	J	GH	57.5	65.0	35.0	52.5	20.3	1.2	20	2800	25.0	3.3	7.3	35	20
150.0	550	FE52GK6J0157*B	J	GK	57.5	70.0	35.0	52.5	20.3	1.2	20	3000	27.0	3.1	6.6	35	20
160.0	550	FE52GL6J0167*B	J	GL	57.5	80.0	35.0	52.5	20.3	1.2	20	3200	29.0	3.0	5.9	35	20
170.0	550	FE52GL6J0177*B	J	GL	57.5	80.0	35.0	52.5	20.3	1.2	20	3400	32.0	2.8	5.2	35	20
					Voltage Vndc 600V				Voltage Code Q								
10.0	600	FE37F46Q0106*A	Q	F4	42.5	36.0	19.0	37.5	10.2	1.2	25	250	8.0	12.0	19.5	30	56
12.0	600	FE37F46Q0126*A	Q	F4	42.5	36.0	19.0	37.5	10.2	1.2	25	300	9.0	10.0	18.5	30	56
15.0	600	FE37F46Q0156*A	Q	F4	42.5	36.0	19.0	37.5	10.2	1.2	25	375	10.0	8.0	18.8	30	56
20.0	600	FE37F56Q0206*A	Q	F5	42.5	38.0	20.0	37.5	10.2	1.2	25	500	12.0	6.0	17.4	30	56
20.0	600	FE37F66Q0206*A	Q	F6	42.5	40.0	20.0	37.5	10.2	1.2	35	700	11.0	6.0	20.7	30	56
22.0	600	FE37F56Q0226*A	Q	F5	42.5	38.0	20.0	37.5	10.2	1.2	25	550	12.0	7.0	14.9	30	56
25.0	600	FE37F56Q0256*A	Q	F5	42.5	38.0	20.0	37.5	10.2	1.2	25	625	13.0	6.0	14.8	30	56
30.0	600	FE37F86Q0306*B	Q	F8	42.5	44.0	24.0	37.5	10.2	1.2	25	750	15.0	5.0	13.3	30	49
30.0	600	FE37FL6Q0306*A	Q	FL	42.5	37.0	28.0	37.5	10.2	1.2	35	1050	13.0	5.5	16.1	30	42
35.0	600	FE37F86Q0356*A	Q	F8	42.5	44.0	24.0	37.5	10.2	1.2	35	1225	16.5	5.0	11.0	30	49
35.0	600	FE37F96Q0356*B	Q	F9	42.5	45.0	30.0	37.5	20.3	1.2	25	875	18.0	3.5	13.2	30	35
40.0	600	FE37F96Q0406*B	Q	F9	42.5	45.0	30.0	37.5	20.3	1.2	35	1400	18.0	4.0	11.6	30	35
45.0	600	FE37F96Q0456*B	Q	F9	42.5	45.0	30.0	37.5	20.3	1.2	25	1125	18.0	3.5	13.2	30	35
50.0	600	FE37FP6Q0506*B	Q	FP	42.5	57.0	30.0	37.5	20.3	1.2	25	1250	19.0	2.5	16.6	30	35
35.0	600	FE52G66Q0356*B	Q	G6	57.5	22.0	43.0	52.5	20.3	1.2	20	700	13.5	5.5	15.0	35	15
40.0	600	FE52G96Q0406*B	Q	G9	57.5	45.0	25.0	52.5	20.3	1.2	14	560	14.0	6.0	12.8	35	30
45.0	600	FE52G96Q0456*B	Q	G9	57.5	45.0	25.0	52.5	10.2	1.2	14	630	14.0	6.0	12.8	35	30
50.0	600	FE52GA6Q0506*B	Q	GA	57.5	45.0	30.0	52.5	20.3	1.2	14	700	16.0	5.0	11.7	35	25
50.0	600	FE52GC6Q0506*B	Q	GC	57.5	50.0	35.0	52.5	20.3	1.2	20	1000	14.0	6.5	11.8	35	20

DC FILTERING

FE - Standard *RoHS Compliant

RATING & PART NUMBER REFERENCE

Cap	Rated Voltage	PN	Voltage Code	Case Code	Dimensions						dv/dt	Peak Current	I _{rms}	ESR 10KHz	R _{th}	ESL	SPQ
					W ± 0.5	H ± 0.5	T ± 0.5	P1 ± 1.0	P2 ± 1.0	d ± 0.05							
					mm	mm	mm	mm	mm	mm							
55.0	600	FE52GA6Q0556*B	Q	GA	57.5	45.0	30.0	52.5	20.3	1.2	14	770	16.0	5.0	11.7	35	25
60.0	600	FE52GA6Q0606*B	Q	GA	57.5	45.0	30.0	52.5	20.3	1.2	14	840	17.0	4.0	13.0	35	25
60.0	600	FE52GC6Q0606*B	Q	GC	57.5	50.0	35.0	52.5	20.3	1.2	20	1200	16.0	5.0	11.7	35	20
65.0	600	FE52GC6Q0656*B	Q	GC	57.5	50.0	35.0	52.5	20.3	1.2	14	910	20.0	3.5	10.7	35	20
70.0	600	FE52GC6Q0706*B	Q	GC	57.5	50.0	35.0	52.5	20.3	1.2	20	1400	18.0	5.0	9.3	35	20
75.0	600	FE52GC6Q0756*B	Q	GC	57.5	50.0	35.0	52.5	20.3	1.2	14	1050	21.0	3.5	9.7	35	20
80.0	600	FE52GC6Q0806*B	Q	GC	57.5	50.0	35.0	52.5	20.3	1.2	14	1120	21.0	3.5	9.7	35	20
80.0	600	FE52GE6Q0806*B	Q	GE	57.5	55.0	45.0	52.5	20.3	1.2	20	1600	20.0	4.0	9.4	35	15
90.0	600	FE52GB6Q0906*B	Q	GB	57.5	45.0	45.0	52.5	20.3	1.2	14	1260	22.0	3.0	10.3	35	15
90.0	600	FE52GE6Q0906*B	Q	GE	57.5	55.0	45.0	52.5	20.3	1.2	20	1800	24.0	4.0	6.5	35	15
100.0	600	FE52GB6Q0107*B	Q	GB	57.5	45.0	45.0	52.5	20.3	1.2	14	1400	23.0	2.5	11.3	35	15
100.0	600	FE52GD6Q0107*B	Q	GD	57.5	53.0	50.0	52.5	20.3	1.2	20	2000	26.0	4.0	5.5	35	15
110.0	600	FE52GD6Q0117*B	Q	GD	57.5	53.0	50.0	52.5	20.3	1.2	20	2200	28.0	3.5	5.5	35	15
120.0	600	FE52GF6Q0127*B	Q	GF	57.5	60.0	35.0	52.5	20.3	1.2	20	2400	30.0	3.4	4.9	35	20
130.0	600	FE52GH6Q0137*B	Q	GH	57.5	65.0	35.0	52.5	20.3	1.2	20	2600	32.0	3.3	4.4	35	20
140.0	600	FE52GI6Q0147*B	Q	GI	57.5	65.0	45.0	52.5	20.3	1.2	20	2800	34.0	3.2	4.1	35	15
140.0	600	FE52GK6Q0147*B	Q	GK	57.5	70.0	35.0	52.5	20.3	1.2	20	2800	34.0	3.2	4.1	35	20
150.0	600	FE52GL6Q0157*B	Q	GL	57.5	80.0	35.0	52.5	20.3	1.2	20	3000	36.0	3.0	3.9	35	20
200.0	600	FE52GJ6Q0207*D	Q	GJ	57.5	65.0	70.0	52.5	20.3	1.2	5	1000	30.0	2.0	8.3	35	10
400.0	600	FE52GG6Q0407*E	Q	GG	57.5	65.0	130.0	52.5	20.3	1.2	2.5	1000	50.0	1.5	4.0	35	5
					Voltage V _{ndc} 700V			Voltage Code A									
15.0	700	FE37F6A0156*A	A	F6	42.5	33.5	22.0	37.5	10.2	1.2	35	525	10.0	8.0	18.8	30	49
15.0	700	FE37F6A0156*A	A	F6	42.5	40.0	20.0	37.5	10.2	1.2	35	525	10.0	8.0	18.8	30	56
20.0	700	FE37FL6A0206*A	A	FL	42.5	37.0	28.0	37.5	10.2	1.2	35	700	12.0	7.5	13.9	30	42
22.0	700	FE37F86A0226*A	A	F8	42.5	44.0	24.0	37.5	10.2	1.2	35	770	14.0	6.5	11.8	30	49
25.0	700	FE37F86A0256*A	A	F8	42.5	44.0	24.0	37.5	10.2	1.2	35	875	16.0	6.0	9.8	30	49
30.0	700	FE37F96A0306*B	A	F9	42.5	45.0	30.0	37.5	20.3	1.2	35	1050	16.0	5.8	10.1	30	35
35.0	700	FE37FN6A0356*B	A	FN	42.5	50.0	35.0	37.5	20.3	1.2	35	1225	20.0	5.5	6.8	30	28
30.0	700	FE52G66A0306*B	A	G6	57.5	22.0	43.0	52.5	20.3	1.2	20	600	12.0	8.5	12.3	35	15
40.0	700	FE52GA6A0406*B	A	GA	57.5	45.0	30.0	52.5	20.3	1.2	20	800	14.0	5.0	15.3	35	25
45.0	700	FE52GA6A0456*B	A	GA	57.5	45.0	30.0	52.5	20.3	1.2	20	900	15.5	5.0	12.5	35	25
50.0	700	FE52GC6A0506*B	A	GC	57.5	50.0	35.0	52.5	20.3	1.2	20	1000	15.0	4.8	13.9	35	20
55.0	700	FE52GC6A0556*B	A	GC	57.5	50.0	35.0	52.5	20.3	1.2	20	1100	16.0	4.5	13.0	35	20
60.0	700	FE52GC6A0606*B	A	GC	57.5	50.0	35.0	52.5	20.3	1.2	20	1200	18.0	4.0	11.6	35	20
65.0	700	FE52GE6A0656*B	A	GE	57.5	55.0	45.0	52.5	20.3	1.2	20	1300	20.0	4.0	9.4	35	15
70.0	700	FE52GE6A0706*B	A	GE	57.5	55.0	45.0	52.5	20.3	1.2	20	1400	20.0	3.8	9.9	35	15
75.0	700	FE52GE6A0756*B	A	GE	57.5	55.0	45.0	52.5	20.3	1.2	20	1500	20.0	3.8	9.9	35	15
80.0	700	FE52GE6A0806*B	A	GE	57.5	55.0	45.0	52.5	20.3	1.2	20	1600	22.0	3.5	8.9	35	15
80.0	700	FE52GF6A0806*B	A	GF	57.5	60.0	35.0	52.5	20.3	1.2	20	1600	23.0	3.4	8.3	35	20
90.0	700	FE52GE6A0906*B	A	GE	57.5	55.0	45.0	52.5	20.3	1.2	20	1800	24.0	3.5	7.4	35	15
90.0	700	FE52GF6A0906*B	A	GF	57.5	60.0	35.0	52.5	20.3	1.2	20	1800	24.0	3.5	7.4	35	20
100.0	700	FE52GH6A0107*B	A	GH	57.5	65.0	35.0	52.5	20.3	1.2	20	2000	26.0	3.5	6.3	35	20
110.0	700	FE52GK6A0117*B	A	GK	57.5	70.0	35.0	52.5	20.3	1.2	20	2200	28.0	3.4	5.6	35	20
120.0	700	FE52GL6A0127*B	A	GL	57.5	80.0	35.0	52.5	20.3	1.2	20	2400	30.0	3.0	5.6	35	20
130.0	700	FE52GI6A0137*B	A	GI	57.5	65.0	45.0	52.5	20.3	1.2	20	2600	32.0	2.8	5.2	35	15
					Voltage V _{ndc} 800V			Voltage Code B									
10.0	800	FE37F46B0106*B	B	F4	42.5	36.0	19.0	37.5	10.2	1.2	35	350	8.0	12.0	19.5	30	56
12.0	800	FE37F46B0126*B	B	F4	42.5	36.0	19.0	37.5	10.2	1.2	35	420	9.0	10.0	18.5	30	56
15.0	800	FE37F46B0156*B	B	F4	42.5	36.0	19.0	37.5	10.2	1.2	35	525	10.0	8.0	18.8	30	56
15.0	800	FE37F66B0156*A	B	F6	42.5	40.0	20.0	37.5	10.2	1.2	35	525	10.0	8.0	18.8	30	56
20.0	800	FE37F56B0206*B	B	F5	42.5	38.0	20.0	37.5	10.2	1.2	35	700	12.0	6.0	17.4	30	56
20.0	800	FE37F86B0206*A	B	F8	42.5	44.0	24.0	37.5	10.2	1.2	35	700	13.5	6.5	12.7	30	49
20.0	800	FE37FL6B0206*A	B	FL	42.5	37.0	28.0	37.5	10.2	1.2	35	700	12.0	7.0	14.9	30	42
22.0	800	FE37F86B0226*A	B	F8	42.5	44.0	24.0	37.5	10.2	1.2	35	770	14.0	6.0	12.8	30	49
22.0	800	FE37F86B0226*B	B	F8	42.5	44.0	24.0	37.5	10.2	1.2	35	770	14.0	5.0	15.3	30	49
25.0	800	FE37F86B0256*B	B	F8	42.5	44.0	24.0	37.5	10.2	1.2	35	875	14.0	5.0	15.3	30	49
25.0	800	FE37F96B0256*B	B	F9	42.5	45.0	30.0	37.5	20.3	1.2	35	875	14.0	5.5	13.9	30	35

DC FILTERING

FE - Standard *RoHS Compliant

RATING & PART NUMBER REFERENCE

Cap	Rated Voltage	PN	Voltage Code	Case Code	Dimensions						dv/dt	Peak Current	I _{rms}	ESR 10KHz	R _{th}	ESL	SPQ	
					W ± 0.5	H ± 0.5	T ± 0.5	P1 ± 1.0	P2 ± 1.0	d ± 0.05								
µF	V				mm	mm	mm	mm	mm	mm	V/us	A	A	mΩ	°C/W	nH	pcs	
30.0	800	FE37F96B0306*B	B	F9	42.5	45.0	30.0	37.5	20.3	1.2	35	1050	16.0	4.5	13.0	30	35	
35.0	800	FE37F96B0356*B	B	F9	42.5	45.0	30.0	37.5	20.3	1.2	35	1225	18.0	3.5	13.2	30	35	
40.0	800	FE37FP6B0406*B	B	FP	42.5	57.0	30.0	37.5	20.3	1.2	35	1400	19.0	2.5	16.6	30	35	
30.0	800	FE52G96B0306*B	B	G9	57.5	45.0	25.0	52.5	10.2	1.2	18	540	12.0	8.0	13.0	35	30	
35.0	800	FE52G96B0356*B	B	G9	57.5	45.0	25.0	52.5	10.2	1.2	18	630	13.0	7.0	12.7	35	30	
35.0	800	FE52GA6B0356*B	B	GA	57.5	45.0	30.0	52.5	20.3	1.2	20	700	14.2	6.5	11.4	35	25	
40.0	800	FE52G96B0406*B	B	G9	57.5	45.0	25.0	52.5	10.2	1.2	18	720	14.0	6.0	12.8	35	30	
40.0	800	FE52GA6B0406*B	B	GA	57.5	45.0	30.0	52.5	20.3	1.2	20	800	14.0	6.0	12.8	35	25	
45.0	800	FE52GA6B0456*B	B	GA	57.5	45.0	30.0	52.5	20.3	1.2	20	900	15.5	5.5	11.4	35	25	
47.0	800	FE52GC6B0476*B	B	GC	57.5	50.0	35.0	52.5	20.3	1.2	20	940	17.5	5.0	9.8	35	20	
50.0	800	FE52GA6B0506*B	B	GA	57.5	45.0	30.0	52.5	20.3	1.2	18	900	16.0	5.0	11.7	35	25	
50.0	800	FE52GC6B0506*B	B	GC	57.5	50.0	35.0	52.5	20.3	1.2	20	1000	16.0	5.0	11.7	35	20	
55.0	800	FE52GC6B0556*B	B	GC	57.5	50.0	35.0	52.5	20.3	1.2	20	1100	17.0	4.6	11.3	35	20	
60.0	800	FE52GC6B0606*B	B	GC	57.5	50.0	35.0	52.5	20.3	1.2	18	1080	19.0	4.0	10.4	35	20	
65.0	800	FE52GC6B0656*B	B	GC	57.5	50.0	35.0	52.5	20.3	1.2	18	1170	20.0	3.5	10.9	35	20	
65.0	800	FE52GE6B0656*B	B	GE	57.5	55.0	45.0	52.5	20.3	1.2	20	1300	20.0	4.0	9.4	35	15	
65.0	800	FE52GF6B0656*B	B	GF	57.5	60.0	35.0	52.5	20.3	1.2	20	1300	19.0	4.0	10.4	35	20	
70.0	800	FE52GB6B0706*B	B	GB	57.5	45.0	45.0	52.5	20.3	1.2	18	1260	20.0	3.5	10.7	35	15	
70.0	800	FE52GE6B0706*B	B	GE	57.5	55.0	45.0	52.5	20.3	1.2	20	1400	20.0	3.8	9.9	35	15	
70.0	800	FE52GF6B0706*B	B	GF	57.5	60.0	35.0	52.5	20.3	1.2	20	1400	20.0	3.8	9.9	35	20	
75.0	800	FE52GB6B0756*B	B	GB	57.5	45.0	45.0	52.5	20.3	1.2	18	1350	22.0	3.0	10.3	35	15	
75.0	800	FE52GE6B0756*B	B	GE	57.5	55.0	45.0	52.5	20.3	1.2	20	1500	22.0	3.8	8.2	35	15	
75.0	800	FE52GH6B0756*B	B	GH	57.5	65.0	35.0	52.5	20.3	1.2	20	1500	22.0	3.8	8.2	35	20	
80.0	800	FE52GB6B0806*B	B	GB	57.5	45.0	45.0	52.5	20.3	1.2	18	1440	22.0	3.0	10.3	35	15	
80.0	800	FE52GI6B0806*B	B	GI	57.5	65.0	45.0	52.5	20.3	1.2	20	1600	23.0	3.5	8.1	35	15	
80.0	800	FE52GK6B0806*B	B	GK	57.5	70.0	35.0	52.5	20.3	1.2	20	1600	23.0	3.5	8.1	35	20	
90.0	800	FE52GI6B0906*B	B	GI	57.5	65.0	45.0	52.5	20.3	1.2	20	1800	25.0	3.3	7.3	35	15	
90.0	800	FE52GL6B0906*B	B	GL	57.5	80.0	35.0	52.5	20.3	1.2	20	1800	25.0	3.3	7.3	35	20	
100.0	800	FE52GI6B0107*B	B	GI	57.5	65.0	45.0	52.5	20.3	1.2	20	2000	28.0	3.2	6.0	35	15	
160.0	800	FE52GJ6B0167*D	B	GJ	57.5	65.0	70.0	52.5	20.3	1.2	8	1280	30.0	2.5	6.7	35	10	
320.0	800	FE52GG6B0327*E	B	GG	57.5	65.0	130.0	52.5	20.3	1.2	4	1280	55.0	1.5	3.3	35	5	
					Voltage V _{ndc} 900V			Voltage Code C										
9.0	900	FE37F46C0905*B	C	F4	42.5	36.0	19.0	37.5	10.2	1.2	35	315	9.0	12.0	15.4	30	56	
10.0	900	FE37F46C0106*B	C	F4	42.5	36.0	19.0	37.5	10.2	1.2	35	350	9.0	11.0	16.8	30	56	
10.0	900	FE37F66C0106*A	C	F6	42.5	40.0	20.0	37.5	10.2	1.2	35	350	9.5	11.5	14.5	30	56	
12.0	900	FE37F46C0126*B	C	F4	42.5	36.0	19.0	37.5	10.2	1.2	35	420	9.0	9.0	20.6	30	56	
15.0	900	FE37F56C0156*B	C	F5	42.5	38.0	20.0	37.5	10.2	1.2	35	525	11.0	8.0	15.5	30	56	
15.0	900	FE37F86C0156*A	C	F8	42.5	44.0	24.0	37.5	10.2	1.2	35	525	12.0	7.5	13.9	30	49	
18.0	900	FE37F86C0186*A	C	F8	42.5	44.0	24.0	37.5	10.2	1.2	35	630	12.0	7.5	13.9	30	49	
20.0	900	FE37F86C0206*B	C	F8	42.5	44.0	24.0	37.5	10.2	1.2	35	700	14.0	5.0	15.3	30	49	
20.0	900	FE37F96C0206*B	C	F9	42.5	45.0	30.0	37.5	20.3	1.2	35	700	15.0	5.5	12.1	30	35	
22.0	900	FE37F96C0226*B	C	F9	42.5	45.0	30.0	37.5	20.3	1.2	35	770	15.0	5.0	13.3	30	35	
25.0	900	FE37F96C0256*B	C	F9	42.5	45.0	30.0	37.5	20.3	1.2	35	875	17.0	5.5	9.4	30	35	
30.0	900	FE37FN6C0306*B	C	FN	42.5	50.0	35.0	37.5	20.3	1.2	35	1050	19.0	5.0	8.3	30	28	
30.0	900	FE37FP6C0306*B	C	FP	42.5	57.0	30.0	37.5	20.3	1.2	35	1050	18.0	4.0	11.6	30	35	
35.0	900	FE37FP6C0356*B	C	FP	42.5	57.0	30.0	37.5	20.3	1.2	35	1225	19.0	3.0	13.9	30	35	
20.0	900	FE52G66C0206*B	C	G6	57.5	22.0	43.0	52.5	20.3	1.2	20	400	12.0	8.6	12.1	35	15	
30.0	900	FE52G96C0306*B	C	G9	57.5	45.0	25.0	52.5	10.2	1.2	18	540	13.0	7.0	12.7	35	30	
30.0	900	FE52GA6C0306*B	C	GA	57.5	45.0	30.0	52.5	20.3	1.2	20	600	15.0	5.5	12.1	35	25	
35.0	900	FE52GA6C0356*B	C	GA	57.5	45.0	30.0	52.5	20.3	1.2	18	630	14.0	6.0	12.8	35	25	
35.0	900	FE52GC6C0356*B	C	GC	57.5	50.0	35.0	52.5	20.3	1.2	20	700	15.5	5.5	11.4	35	20	
40.0	900	FE52GA6C0406*B	C	GA	57.5	45.0	30.0	52.5	20.3	1.2	18	720	15.0	5.0	13.3	35	25	
40.0	900	FE52GC6C0406*B	C	GC	57.5	50.0	35.0	52.5	20.3	1.2	20	800	16.0	6.5	9.0	35	20	
45.0	900	FE52GC6C0456*B	C	GC	57.5	50.0	35.0	52.5	20.3	1.2	18	810	17.0	5.0	10.4	35	20	
50.0	900	FE52GC6C0506*B	C	GC	57.5	50.0	35.0	52.5	20.3	1.2	20	1000	18.0	3.6	12.9	35	20	
55.0	900	FE52GB6C0556*B	C	GB	57.5	45.0	45.0	52.5	20.3	1.2	18	990	19.0	4.0	10.4	35	15	
55.0	900	FE52GE6C0556*B	C	GE	57.5	55.0	45.0	52.5	20.3	1.2	20	1100	20.0	3.4	11.0	35	15	

DC FILTERING

FE - Standard *RoHS Compliant

RATING & PART NUMBER REFERENCE

Cap	Rated Voltage	PN	Voltage Code	Case Code	Dimensions						dv/dt	Peak Current	I _{rms}	ESR 10KHz	R _{th}	ESL	SPQ	
					W ± 0.5	H ± 0.5	T ± 0.5	P1 ± 1.0	P2 ± 1.0	d ± 0.05								
µF	V				mm	mm	mm	mm	mm	mm	V/us	A	A	mΩ	°C/W	nH	pcs	
55.0	900	FE52GF6C0556*B	C	GF	57.5	60.0	35.0	52.5	20.3	1.2	20	1100	19.0	3.5	11.9	35	20	
60	900	FE52GB6C0606*B	C	GB	57.5	45.0	45.0	52.5	20.3	1.2	18	1080	20.0	3.5	10.7	35	15	
60.0	900	FE52GE6C0606*B	C	GE	57.5	55.0	45.0	52.5	20.3	1.2	20	1200	20.0	3.4	11.0	35	15	
65.0	900	FE52GK6C0656*B	C	GK	57.5	70.0	35.0	52.5	20.3	1.2	20	1300	22.0	3.3	9.4	35	20	
70.0	900	FE52GE6C0706*B	C	GE	57.5	55.0	45.0	52.5	20.3	1.2	20	1400	24.0	3.2	8.1	35	15	
70.0	900	FE52GL6C0706*B	C	GL	57.5	80.0	35.0	52.5	20.3	1.2	20	1400	24.0	3.2	8.1	35	20	
80.0	900	FE52GI6C0806*B	C	GI	57.5	65.0	45.0	52.5	20.3	1.2	20	1600	25.0	3.2	7.5	35	15	
120	900	FE52GJ6C0127*D	C	GJ	57.5	65.0	70.0	52.5	20.3	1.2	13	1560	25.0	3.0	8.0	35	10	
240	900	FE52GG6C0247*E	C	GG	57.5	65.0	130.0	52.5	20.3	1.2	6	1440	45.0	1.5	4.9	35	5	
					Voltage Vndc 1000V			Voltage Code K										
5.0	1000	FE37F46K0505*B	K	F4	42.5	36.0	19.0	37.5	10.2	1.2	35	175	7.0	19.0	16.1	30	56	
6.0	1000	FE37F46K0605*B	K	F4	42.5	36.0	19.0	37.5	10.2	1.2	35	210	7.0	16.0	19.1	30	56	
7.0	1000	FE37F46K0705*B	K	F4	42.5	36.0	19.0	37.5	10.2	1.2	35	245	7.0	16.0	19.1	30	56	
8.0	1000	FE37F46K0805*B	K	F4	42.5	36.0	19.0	37.5	10.2	1.2	35	280	8.0	14.0	16.7	30	56	
9.0	1000	FE37F46K0905*B	K	F4	42.5	36.0	19.0	37.5	10.2	1.2	35	315	8.0	12.0	19.5	30	56	
10.0	1000	FE37F56K0106*B	K	F5	42.5	38.0	20.0	37.5	10.2	1.2	35	350	9.0	11.0	16.8	30	56	
10.0	1000	FE37F66K0106*A	K	F6	42.5	40.0	20.0	37.5	10.2	1.2	40	400	9.5	11.5	14.5	30	56	
12.0	1000	FE37F56K0126*B	K	F5	42.5	38.0	20.0	37.5	10.2	1.2	35	420	10.0	9.0	16.7	30	56	
12.0	1000	FE37F86K0126*A	K	F8	42.5	44.0	24.0	37.5	10.2	1.2	40	480	10.5	9.0	15.1	30	49	
15.0	1000	FE37F86K0156*A	K	F8	42.5	44.0	24.0	37.5	10.2	1.2	40	600	12.0	7.5	13.9	30	49	
15.0	1000	FE37F86K0156*B	K	F8	42.5	44.0	24.0	37.5	10.2	1.2	35	525	12.0	7.0	14.9	30	49	
15.0	1000	FE37F96K0156*B	K	F9	42.5	45.0	30.0	37.5	20.3	1.2	40	600	14.0	7.5	10.2	30	35	
20.0	1000	FE37F96K0206*B	K	F9	42.5	45.0	30.0	37.5	20.3	1.2	40	800	15.0	6.5	10.3	30	35	
22.0	1000	FE37FP6K0226*B	K	FP	42.5	57.0	30.0	37.5	20.3	1.2	35	770	15.0	5.0	13.3	30	35	
25.0	1000	FE37FN6K0256*B	K	FN	42.5	50.0	35.0	37.5	20.3	1.2	40	1000	18.0	5.5	8.4	30	28	
25.0	1000	FE37FP6K0256*B	K	FP	42.5	57.0	30.0	37.5	20.3	1.2	35	875	17.0	3.5	14.8	30	35	
15.0	1000	FE52G66K0156*B	K	G6	57.5	22.0	43.0	52.5	20.3	1.2	40	600	12.0	8.5	12.3	35	15	
15.0	1000	FE52G96K0156*B	K	G9	57.5	45.0	25.0	52.5	10.2	1.2	18	270	10.0	12.0	12.5	35	30	
20.0	1000	FE52G96K0206*B	K	G9	57.5	45.0	25.0	52.5	10.2	1.2	18	360	10.0	11.0	13.6	35	30	
22.0	1000	FE52G96K0226*B	K	G9	57.5	45.0	25.0	52.5	10.2	1.2	18	396	11.0	10.0	12.4	35	30	
25.0	1000	FE52GA6K0256*B	K	GA	57.5	45.0	30.0	52.5	20.3	1.2	18	450	12.0	9.0	11.6	35	25	
30.0	1000	FE52GA6K0306*B	K	GA	57.5	45.0	30.0	52.5	20.3	1.2	25	750	15.0	5.5	12.1	35	25	
35.0	1000	FE52GC6K0356*B	K	GC	57.5	50.0	35.0	52.5	20.3	1.2	25	875	16.0	5.5	10.7	35	20	
40.0	1000	FE52GC6K0406*B	K	GC	57.5	50.0	35.0	52.5	20.3	1.2	25	1000	16.0	5.0	11.7	35	20	
40.0	1000	FE52GE6K0406*B	K	GE	57.5	55.0	45.0	52.5	20.3	1.2	25	1000	17.0	5.0	10.4	35	15	
45.0	1000	FE52GB6K0456*B	K	GB	57.5	45.0	45.0	52.5	20.3	1.2	18	810	17.0	5.0	10.4	35	15	
50.0	1000	FE52GB6K0506*B	K	GB	57.5	45.0	45.0	52.5	20.3	1.2	18	900	18.0	4.0	11.6	35	15	
50.0	1000	FE52GE6K0506*B	K	GE	57.5	55.0	45.0	52.5	20.3	1.2	25	1250	19.0	4.5	9.2	35	15	
50.0	1000	FE52GH6K0506*B	K	GH	57.5	65.0	35.0	52.5	20.3	1.2	25	1250	19.0	4.5	9.2	35	20	
55.0	1000	FE52GK6K0556*B	K	GK	57.5	70.0	35.0	52.5	20.3	1.2	25	1375	20.0	4.4	8.5	35	20	
60.0	1000	FE52GI6K0606*B	K	GI	57.5	65.0	45.0	52.5	20.3	1.2	25	1500	22.0	4.0	7.7	35	15	
60.0	1000	FE52GL6K0606*B	K	GL	57.5	80.0	35.0	52.5	20.3	1.2	25	1500	22.0	4.0	7.7	35	20	
100.0	1000	FE52GJ6K0107*D	K	GJ	57.5	65.0	70.0	52.5	20.3	1.2	15	1500	25.0	3.5	6.9	35	10	
200.0	1000	FE52GG6K0207*E	K	GG	57.5	65.0	130.0	52.5	20.3	1.2	7	1400	45.0	1.5	4.9	35	5	
					Voltage Vndc 1100V			Voltage Code L										
6.8	1100	FE37FI6L0685*A	L	FI	42.5	33.5	22.0	37.5	10.2	1.2	40	272	12.0	13.5	7.7	30	49	
8.0	1100	FE37F66L0805*A	L	F6	42.5	40.0	20.0	37.5	10.2	1.2	40	320	12.5	12.5	7.7	30	56	
8.0	1100	FE37FK6L0805*A	L	FK	42.5	37.0	22.0	37.5	10.2	1.2	40	320	12.5	12.5	7.7	30	49	
9.0	1100	FE37FK6L0905*A	L	FK	42.5	37.0	22.0	37.5	10.2	1.2	40	360	12.8	12.2	7.5	30	49	
10.0	1100	FE37F86L0106*A	L	F8	42.5	44.0	24.0	37.5	10.2	1.2	40	400	15.0	8.5	7.8	30	49	
12.0	1100	FE37F96L0126*B	L	F9	42.5	45.0	30.0	37.5	20.3	1.2	40	480	15.5	7.5	8.3	30	35	
15.0	1100	FE37F96L0156*B	L	F9	42.5	45.0	30.0	37.5	20.3	1.2	40	600	16.0	7.0	8.4	30	35	
18.0	1100	FE37FN6L0186*B	L	FN	42.5	50.0	35.0	37.5	20.3	1.2	40	720	15.5	7.5	8.3	30	28	
20.0	1100	FE37FN6L0206*B	L	FN	42.5	50.0	35.0	37.5	20.3	1.2	40	800	16.5	7.2	7.7	30	28	
20.0	1100	FE52GA6L0206*B	L	GA	57.5	45.0	30.0	52.5	20.3	1.2	25	500	12.0	8.5	12.3	35	25	
25.0	1100	FE52GC6L0256*B	L	GC	57.5	50.0	35.0	52.5	20.3	1.2	25	625	13.0	8.2	10.8	35	20	
30.0	1100	FE52GC6L0306*B	L	GC	57.5	50.0	35.0	52.5	20.3	1.2	25	750	15.0	5.0	13.3	35	20	

DC FILTERING

FE - Standard *RoHS Compliant

RATING & PART NUMBER REFERENCE

Cap	Rated Voltage	PN	Voltage Code	Case Code	Dimensions						dv/dt	Peak Current	I _{rms}	ESR 10KHz	R _{th}	ESL	SPQ
					W	H	T	P1	P2	d							
					± 0.5	± 0.5	± 0.5	± 1.0	± 1.0	± 0.05							
uF	V																
					mm	mm	mm	mm	mm	mm	V/us	A	A	mΩ	°C/W	nH	pcs
35.0	1100	FE52GF6L0356*B	L	GF	57.5	60.0	35.0	52.5	20.3	1.2	25	875	16.0	4.9	12.0	35	20
40.0	1100	FE52GH6L0406*B	L	GH	57.5	65.0	35.0	52.5	20.3	1.2	25	1000	17.0	5.5	9.4	35	20
40.0	1100	FE52GE6L0406*B	L	GE	57.5	55.0	45.0	52.5	20.3	1.2	25	1000	17.0	5.5	9.4	35	15
45.0	1100	FE52GK6L0456*B	L	GK	57.5	70.0	35.0	52.5	20.3	1.2	25	1125	18.0	5.4	8.6	35	20
50.0	1100	FE52GI6L0506*B	L	GI	57.5	65.0	45.0	52.5	20.3	1.2	25	1250	19.5	5.2	7.6	35	15
					Voltage Vndc1200V				Voltage Code P								
5.0	1200	FE37F46P0505*B	P	F4	42.5	36.0	19.0	37.5	10.2	1.2	40	200	7.0	16.0	19.1	30	56
6.0	1200	FE37F46P0605*B	P	F4	42.5	36.0	19.0	37.5	10.2	1.2	40	240	8.0	14.0	16.7	30	56
7.0	1200	FE37F56P0705*B	P	F5	42.5	38.0	20.0	37.5	10.2	1.2	40	280	9.0	12.0	15.4	30	56
7.0	1200	FE37FK6P0705*A	P	FK	42.5	37.0	22.0	37.5	10.2	1.2	45	315	8.0	15.2	15.4	30	49
8.0	1200	FE37F56P0805*B	P	F5	42.5	38.0	20.0	37.5	10.2	1.2	40	320	10.0	10.0	15.0	30	56
8.0	1200	FE37F86P0805*A	P	F8	42.5	44.0	24.0	37.5	10.2	1.2	45	360	9.0	12.5	14.8	30	49
9.0	1200	FE37F86P0905*B	P	F8	42.5	44.0	24.0	37.5	10.2	1.2	40	360	11.0	9.0	13.8	30	49
10.0	1200	FE37F86P0106*A	P	F8	42.5	44.0	24.0	37.5	10.2	1.2	45	450	10.0	10.5	14.3	30	49
10.0	1200	FE37F86P0106*B	P	F8	42.5	44.0	24.0	37.5	10.2	1.2	40	400	11.0	8.0	15.5	30	49
10.0	1200	FE37F96P0106*B	P	F9	42.5	45.0	30.0	37.5	20.3	1.2	45	450	12.0	8.0	13.0	30	35
12.0	1200	FE37F96P0126*B	P	F9	42.5	45.0	30.0	37.5	20.3	1.2	40	480	13.0	7.0	12.7	30	35
15.0	1200	FE37FN6P0156*B	P	FN	42.5	50.0	35.0	37.5	20.3	1.2	45	675	15.0	6.5	10.3	30	28
15.0	1200	FE37FP6P0156*B	P	FP	42.5	57.0	30.0	37.5	20.3	1.2	40	600	14.0	5.0	15.3	30	35
10.0	1200	FE52G96P0106*B	P	G9	57.5	45.0	25.0	52.5	10.2	1.2	20	200	9.0	16.0	11.6	35	30
12.0	1200	FE52G96P0126*B	P	G9	57.5	45.0	25.0	52.5	10.2	1.2	20	240	9.0	13.0	14.2	35	30
15.0	1200	FE52G96P0156*B	P	G9	57.5	45.0	25.0	52.5	10.2	1.2	20	300	10.0	11.0	13.6	35	30
20.0	1200	FE52GA6P0206*B	P	GA	57.5	45.0	30.0	52.5	20.3	1.2	30	600	13.0	8.5	10.4	35	25
22.0	1200	FE52GC6P0226*B	P	GC	57.5	50.0	35.0	52.5	20.3	1.2	20	440	14.0	7.0	10.9	35	20
25.0	1200	FE52GC6P0256*B	P	GC	57.5	50.0	35.0	52.5	20.3	1.2	30	750	15.0	6.5	10.3	35	20
30.0	1200	FE52GB6P0306*B	P	GB	57.5	45.0	45.0	52.5	20.3	1.2	20	600	16.0	5.0	11.7	35	15
30.0	1200	FE52GE6P0306*B	P	GE	57.5	55.0	45.0	52.5	20.3	1.2	30	900	17.0	5.5	9.4	35	15
30.0	1200	FE52GF6P0306*B	P	GF	57.5	60.0	35.0	52.5	20.3	1.2	30	900	17.0	5.5	9.4	35	20
35.0	1200	FE52GE6P0356*B	P	GE	57.5	55.0	45.0	52.5	20.3	1.2	30	1050	18.0	5.0	9.3	35	15
35.0	1200	FE52GK6P0356*B	P	GK	57.5	70.0	35.0	52.5	20.3	1.2	30	1050	18.0	5.0	9.3	35	20
40.0	1200	FE52GI6P0406*B	P	GI	57.5	65.0	45.0	52.5	20.3	1.2	30	1200	20.0	4.5	8.3	35	15
45.0	1200	FE52GI6P0456*B	P	GI	57.5	65.0	45.0	52.5	20.3	1.2	30	1350	22.0	4.3	7.2	35	15
60.0	1200	FE52GJ6P0606*D	P	GJ	57.5	65.0	70.0	52.5	20.3	1.2	20	1200	40.0	2.5	3.8	35	10
65.0	1200	FE52GJ6P0656*D	P	GJ	57.5	65.0	70.0	52.5	20.3	1.2	18	1170	40.0	2.0	4.7	35	10
140.0	1200	FE52GG6P0147*E	P	GG	57.5	65.0	130.0	52.5	20.3	1.2	10	1400	45.0	1.5	4.9	35	5

DC FILTERING

FE - Low Profile *RoHS Compliant

CASE CODE

mm

Case Code	Dimensions					
	W ± 0.5	H ± 0.5	T ± 0.5	P1 ± 1.0	P2 ± 1.0	d ± 0.05
	mm	mm	mm	mm	mm	mm
FA	42.0	15.0	27.0	37.5	10.2	1.2
FB	42.0	15.0	33.0	37.5	10.2	1.2
FC	42.0	18.0	24.0	37.5	10.2	1.2
FD	42.0	18.0	27.0	37.5	10.2	1.2
FE	42.0	18.0	39.0	37.5	10.2	1.2
FF	42.0	24.0	30.0	37.5	10.2	1.2
FG	42.0	24.0	39.0	37.5	10.2	1.2
G1	57.5	15.0	33.0	52.5	20.3	1.2
G2	57.5	15.0	45.0	52.5	20.3	1.2
G3	57.5	15.0	62.0	52.5	20.3	1.2
G4	57.5	18.0	35.0	52.5	20.3	1.2
G5	57.5	18.0	50.0	52.5	20.3	1.2
G7	57.5	24.0	39.0	52.5	20.3	1.2
G8	57.5	24.0	70.0	52.5	20.3	1.2

LOW PROFILE RATING & PART NUMBER REFERENCE

Cap uF	Rated Voltage V	PN	Voltage Code	Case Code	Dimensions						dv/dt V/us	Peak Current A	Irms A	ESR 10KHz mΩ	Rth °C/W	ESL nH	SPQ pcs
					W ± 0.5	H ± 0.5	T ± 0.5	P1 ± 1.0	P2 ± 1.0	d ± 0.05							
					mm	mm	mm	mm	mm	mm							
					Voltage Vndc 500V			Voltage Code H									
10.0	500	FE37FA8H0106*A	H	FA	42.0	15.0	27.0	37.5	10.2	1.2	15	150	5.0	7.5	80.0	30	42
15.0	500	FE37FB8H0156*A	H	FB	42.0	15.0	33.0	37.5	10.2	1.2	15	225	7.0	5.0	61.2	30	35
20.0	500	FE52G18H0206*B	H	G1	57.5	15.0	33.0	52.5	20.3	1.2	7	140	6.5	8.0	44.4	35	30
30.0	500	FE52G28H0306*B	H	G2	57.5	15.0	45.0	52.5	20.3	1.2	7	210	9.0	5.5	33.7	35	15
50.0	500	FE52G38H0506*D	H	G3	57.5	15.0	62.0	52.5	20.3	1.2	7	350	13.5	3.5	23.5	35	10
10.0	500	FE37FC8H0106*A	H	FC	42.0	18.0	24.0	37.5	10.2	1.2	15	150	5.5	7.5	66.1	30	49
15.0	500	FE37FD8H0156*A	H	FD	42.0	18.0	27.0	37.5	10.2	1.2	15	225	7.0	5.0	61.2	30	42
20.0	500	FE37FE8H0206*A	H	FE	42.0	18.0	39.0	37.5	10.2	1.2	15	300	9.0	4.0	46.3	30	28
30.0	500	FE52G48H0306*B	H	G4	57.5	18.0	35.0	52.5	20.3	1.2	7	210	8.5	5.5	37.7	35	20
50.0	500	FE52G58H0506*B	H	G5	57.5	18.0	50.0	52.5	20.3	1.2	7	350	12.5	3.5	27.4	35	15
20.0	500	FE37FF8H0206*A	H	FF	42.0	24.0	30.0	37.5	10.2	1.2	15	300	9.0	4.0	46.3	30	35
30.0	500	FE37FG8H0306*A	H	FG	42.0	24.0	39.0	37.5	10.2	1.2	15	450	12.0	2.5	41.7	30	28
50.0	500	FE52G78H0506*B	H	G7	57.5	24.0	39.0	52.5	20.3	1.2	7	350	12.5	3.5	27.4	35	20
100.0	500	FE52G88H0107*D	H	G8	57.5	24.0	70.0	52.5	20.3	1.2	7	700	22.0	2.0	15.5	35	10
					Voltage Vndc 700V			Voltage Code A									
7.0	700	FE37FA8A0705*A	A	FA	42.0	15.0	27.0	37.5	10.2	1.2	17	119	5.0	11.5	52.2	30	42
10.0	700	FE37FB8A0106*A	A	FB	42.0	15.0	33.0	37.5	10.2	1.2	17	170	6.5	8.0	44.4	30	35
15.0	700	FE52G18A0156*B	A	G1	57.5	15.0	33.0	52.5	20.3	1.2	8	120	6.5	10.0	35.5	35	30
20.0	700	FE52G28A0206*B	A	G2	57.5	15.0	45.0	52.5	20.3	1.2	8	160	8.5	7.5	27.7	35	15
30.0	700	FE52G38A0306*D	A	G3	57.5	15.0	62.0	52.5	20.3	1.2	8	240	12.0	5.0	20.8	35	10
7.0	700	FE37FC8A0705*A	A	FC	42.0	18.0	24.0	37.5	10.2	1.2	17	119	5.0	11.5	52.2	30	49
10.0	700	FE37FD8A0106*A	A	FD	42.0	18.0	27.0	37.5	10.2	1.2	17	170	6.5	8.0	44.4	30	42
15.0	700	FE37FE8A0156*A	A	FE	42.0	18.0	39.0	37.5	10.2	1.2	17	255	9.0	5.5	33.7	30	28
20.0	700	FE52G48A0206*B	A	G4	57.5	18.0	35.0	52.5	20.3	1.2	8	160	8.0	7.5	31.3	35	20
30.0	700	FE52G58A0306*B	A	G5	57.5	18.0	50.0	52.5	20.3	1.2	8	240	11.5	5.0	22.7	35	15
15.0	700	FE37FF8A0156*A	A	FF	42.0	24.0	30.0	37.5	10.2	1.2	17	255	9.0	5.5	33.7	30	35
20.0	700	FE37FG8A0206*A	A	FG	42.0	24.0	39.0	37.5	10.2	1.2	17	340	11.5	4.0	28.4	30	28
30.0	700	FE52G78A0306*B	A	G7	57.5	24.0	39.0	52.5	20.3	1.2	8	240	11.0	5.0	24.8	35	20
50.0	700	FE52G88A0506*D	A	G8	57.5	24.0	70.0	52.5	20.3	1.2	8	400	18.0	3.0	15.4	35	10
					Voltage Vndc 1000V			Voltage Code K									
5.0	1000	FE37FA8K0505*A	K	FA	42.0	15.0	27.0	37.5	10.2	1.2	25	125	4.5	11.5	64.4	30	42
7.0	1000	FE37FB8K0705*A	K	FB	42.0	15.0	33.0	37.5	10.2	1.2	25	175	6.0	8.0	52.1	30	35
10.0	1000	FE52G18K0106*B	K	G1	57.5	15.0	33.0	52.5	20.3	1.2	12	120	6.0	10.0	41.7	35	30

DC FILTERING

FE - Low Profile *RoHS Compliant

LOW PROFILE RATING & PART NUMBER REFERENCE

Cap	Rated Voltage	PN	Voltage Code	Case Code	Dimensions						dv/dt	Peak Current	I _{rms}	ESR 10KHz	R _{th}	ESL	SPQ
					W ± 0.5	H ± 0.5	T ± 0.5	P1 ± 1.0	P2 ± 1.0	d ± 0.05							
uF	V				mm	mm	mm	mm	mm	mm	V/us	A	A	mΩ	°C/W	nH	pcs
15.0	1000	FE52G28K0156*B	K	G2	57.5	15.0	45.0	52.5	20.3	1.2	12	180	8.0	6.5	36.1	35	15
20.0	1000	FE52G38K0206*D	K	G3	57.5	15.0	62.0	52.5	20.3	1.2	12	240	11.0	5.0	24.8	35	10
3.0	1000	FE37FC8K0305*A	K	FC	42.0	18.0	24.0	37.5	10.2	1.2	25	75	3.5	19.0	64.4	30	49
5.0	1000	FE37FD8K0505*A	K	FD	42.0	18.0	27.0	37.5	10.2	1.2	25	125	5.0	11.5	52.2	30	42
7.0	1000	FE37FE8K0705*A	K	FE	42.0	18.0	39.0	37.5	10.2	1.2	25	175	7.0	8.0	38.3	30	28
10.0	1000	FE37FE8K0106*A	K	FE	42.0	18.0	39.0	37.5	10.2	1.2	25	250	8.0	6.0	39.1	30	28
15.0	1000	FE52G58K0156*B	K	G5	57.5	18.0	50.0	52.5	20.3	1.2	12	180	9.0	6.5	28.5	35	15
20.0	1000	FE52G58K0206*B	K	G5	57.5	18.0	50.0	52.5	20.3	1.2	12	240	10.0	5.0	30.0	35	15
7.0	1000	FE37FF8K0705*A	K	FF	42.0	24.0	30.0	37.5	10.2	1.2	25	175	6.5	8.0	44.4	30	35
10.0	1000	FE37FG8K0106*A	K	FG	42.0	24.0	39.0	37.5	10.2	0.5	25	250	9.0	6.0	30.9	30	28
15.0	1000	FE52G78K0156*B	K	G7	57.5	24.0	39.0	52.5	20.3	1.2	12	180	8.5	6.5	31.9	35	20
20.0	1000	FE52G78K0206*B	K	G7	57.5	24.0	39.0	52.5	20.3	1.2	12	240	10.0	5.0	30.0	35	20
30.0	1000	FE52G88K0306*D	K	G8	57.5	24.0	70.0	52.5	20.3	1.2	12	360	15.5	4.0	15.6	35	10

DC FILTERING

FE - THB *RoHS Compliant

CASE CODE

mm

Case Code	Dimensions					
	W ± 0.5	H ± 0.5	T ± 0.5	P1 ± 1.0	P2 ± 1.0	d ± 0.05
	mm	mm	mm	mm	mm	mm
FI	42.5	33.5	22.0	37.5	10.2	1.2
FK	42.5	37.0	22.0	37.5	10.2	1.2
FL	42.5	37.0	28.0	37.5	10.2	1.2
F6	42.5	40.0	20.0	37.5	10.2	1.2
F8	42.5	44.0	24.0	37.5	10.2	1.2
F9	42.5	45.0	30.0	37.5	20.3	1.2
FN	42.5	50.0	35.0	37.5	20.3	1.2
G6	57.5	22.0	43.0	52.5	20.3	1.2
GA	57.5	45.0	30.0	52.5	20.3	1.2
GC	57.5	50.0	35.0	52.5	20.3	1.2
GD	57.5	53.0	50.0	52.5	20.3	1.2
GE	57.5	55.0	45.0	52.5	20.3	1.2
GF	57.5	60.0	35.0	52.5	20.3	1.2
GH	57.5	65.0	35.0	52.5	20.3	1.2
GI	57.5	65.0	45.0	52.5	20.3	1.2
GK	57.5	70.0	35.0	52.5	20.3	1.2
GL	57.5	80.0	35.0	52.5	20.3	1.2

RATING & PART NUMBER REFERENCE

Cap uF	Rated Voltage V	PN	Voltage Code	Case Code	Dimensions						dv/dt V/us	Peak Current A	I _{rms} A	ESR 10KHz mΩ	R _{th} °C/W	ESL nH	SPQ pcs
					W ± 0.5	H ± 0.5	T ± 0.5	P1 ± 1.0	P2 ± 1.0	d ± 0.05							
					mm	mm	mm	mm	mm	mm							
					Voltage V _{ndc} 450V												
25.0	450	FE37FK7I0256*A	I	FK	42.5	37.0	22.0	37.5	10.2	1.2	35	875	12.5	5.5	17.5	30	49
30.0	450	FE37F67I0306*A	I	F6	42.5	40.0	20.0	37.5	10.2	1.2	35	1050	12.0	6.0	17.4	30	56
40.0	450	FE37FL7I0406*A	I	FL	42.5	37.0	28.0	37.5	10.2	1.2	35	1400	14.0	5.5	13.9	30	42
40.0	450	FE37F87I0406*A	I	F8	42.5	44.0	24.0	37.5	10.2	1.2	35	1400	15.0	5.2	12.8	30	49
40.0	450	FE52G67I0406*B	I	G6	57.5	22.0	43.0	52.5	20.3	1.2	35	1400	12.0	8.0	13.0	35	15
50.0	450	FE37F97I0506*B	I	F9	42.5	45.0	30.0	37.5	20.3	1.2	35	1750	15.0	4.0	16.7	30	35
50.0	450	FE52G67I0506*B	I	G6	57.5	22.0	43.0	52.5	20.3	1.2	35	1750	14.0	6.5	11.8	35	15
55.0	450	FE52GA7I0556*B	I	GA	57.5	45.0	30.0	52.5	20.3	1.2	35	1925	15.5	5.0	12.5	35	25
60.0	450	FE52GA7I0606*B	I	GA	57.5	45.0	30.0	52.5	20.3	1.2	35	2100	16.5	4.5	12.2	35	25
60.0	450	FE37F97I0606*B	I	F9	42.5	45.0	30.0	37.5	20.3	1.2	35	2100	16.5	4.0	13.8	30	35
80.0	450	FE52GA7I0806*B	I	GA	57.5	45.0	30.0	52.5	20.3	1.2	20	1600	16.0	4.0	14.6	35	25
100.0	450	FE52GC7I0107*B	I	GC	57.5	50.0	35.0	52.5	20.3	1.2	20	2000	18.0	3.8	12.2	35	20
130.0	450	FE52GF7I0137*B	I	GF	57.5	60.0	35.0	52.5	20.3	1.2	20	2600	22.0	3.5	8.9	35	20
140.0	450	FE52GH7I0147*B	I	GH	57.5	65.0	35.0	52.5	20.3	1.2	20	2800	24.0	3.4	7.7	35	20
150.0	450	FE52GK7I0157*B	I	GK	57.5	70.0	35.0	52.5	20.3	1.2	20	3000	26.0	3.2	6.9	35	20
160.0	450	FE52GL7I0167*B	I	GL	57.5	80.0	35.0	52.5	20.3	1.2	20	3200	28.0	3.1	6.2	35	20
170.0	450	FE52GL7I0177*B	I	GL	57.5	80.0	35.0	52.5	20.3	1.2	20	3400	30.0	3.0	5.6	35	20
					Voltage V _{ndc} 550V												
20.0	550	FE37F67J0206*A	J	F6	42.5	40.0	20.0	37.5	10.2	1.2	35	700	12.5	6.5	14.8	30	56
22.0	550	FE37F67J0226*A	J	F6	42.5	40.0	20.0	37.5	10.2	1.2	35	770	13.5	6.5	12.7	30	56
25.0	550	FE37F67J0256*A	J	F6	42.5	40.0	20.0	37.5	10.2	1.2	35	875	14.5	6.5	11.0	30	56
30.0	550	FE37F87J0306*A	J	F8	42.5	44.0	24.0	37.5	10.2	1.2	35	1050	16.0	6.0	9.8	30	49
35.0	550	FE37F97J0356*B	J	F9	42.5	45.0	30.0	37.5	20.3	1.2	35	1225	18.0	6.0	7.7	30	35
40.0	550	FE37F97J0406*B	J	F9	42.5	45.0	30.0	37.5	20.3	1.2	35	1400	18.0	5.5	8.4	30	35
40.0	550	FE52G67J0406*B	J	G6	57.5	22.0	43.0	52.5	20.3	1.2	35	1400	16.0	5.8	10.1	35	15
50.0	550	FE37FN7J0506*B	J	FN	42.5	50.0	35.0	37.5	20.3	1.2	35	1750	20.0	5.0	7.5	30	28
60.0	550	FE37GA7J0606*B	J	GA	57.5	45.0	30.0	37.5	20.3	1.2	20	1200	18.0	4.8	9.6	35	25
75.0	550	FE52GC7J0756*B	J	GC	57.5	50.0	35.0	52.5	20.3	1.2	20	1500	20.0	5.0	7.5	35	20
100.0	550	FE52GE7J0107*B	J	GE	57.5	55.0	45.0	52.5	20.3	1.2	20	2000	24.0	4.5	5.8	35	15
110.0	550	FE52GE7J0117*B	J	GE	57.5	55.0	45.0	52.5	20.3	1.2	20	2200	26.0	4.0	5.5	35	15
130.0	550	FE52GF7J0137*B	J	GF	57.5	60.0	35.0	52.5	20.3	1.2	20	2600	23.0	3.4	8.3	35	20

DC FILTERING

FE - THB *RoHS Compliant

RATING & PART NUMBER REFERENCE

Cap	Rated Voltage	PN	Voltage Code	Case Code	Dimensions						dv/dt	Peak Current	I _{rms}	ESR 10KHz	R _{th}	ESL	SPQ
					W	H	T	P1	P2	d							
					± 0.5	± 0.5	± 0.5	± 1.0	± 1.0	± 0.05							
µF	V									V/us	A	A	mΩ	°C/W	nH	pcs	
140.0	550	FE52GH7J0147*B	J	GH	57.5	65.0	35.0	52.5	20.3	1.2	20	2800	25.0	3.3	7.3	35	20
150.0	550	FE52GK7J0157*B	J	GK	57.5	70.0	35.0	52.5	20.3	1.2	20	3000	27.0	3.1	6.6	35	20
160.0	550	FE52GL7J0167*B	J	GL	57.5	80.0	35.0	52.5	20.3	1.2	20	3200	29.0	3.0	5.9	35	20
170.0	550	FE52GL7J0177*B	J	GL	57.5	80x.0	35.0	52.5	20.3	1.2	20	3400	32.0	2.8	5.2	35	20
					Voltage V _{ndc} 600V			Voltage Code Q									
20.0	600	FE37F67Q0206*A	Q	F6	42.5	40.0	20.0	37.5	10.2	1.2	35	700	11.0	6.0	20.7	30	56
30.0	600	FE37FL7Q0306*A	Q	FL	42.5	37.0	28.0	37.5	10.2	1.2	35	1050	13.0	5.5	16.1	30	42
35.0	600	FE37F87Q0356*A	Q	F8	42.5	44.0	24.0	37.5	10.2	1.2	35	1225	16.5	5.0	11.0	30	49
35.0	600	FE52G67Q0356*B	Q	G6	57.5	22.0	43.0	52.5	20.3	1.2	20	700	13.5	5.5	15.0	35	15
40.0	600	FE37F97Q0406*B	Q	F9	42.5	45.0	30.0	37.5	20.3	1.2	35	1400	18.0	4.0	11.6	30	35
50.0	600	FE52GC7Q0506*B	Q	GC	57.5	50.0	35.0	52.5	20.3	1.2	20	1000	14.0	6.5	11.8	35	20
60.0	600	FE52GC7Q0606*B	Q	GC	57.5	50.0	35.0	52.5	20.3	1.2	20	1200	16.0	5.0	11.7	35	20
70.0	600	FE52GC7Q0706*B	Q	GC	57.5	50.0	35.0	52.5	20.3	1.2	20	1400	18.0	5.0	9.3	35	20
80.0	600	FE52GE7Q0806*B	Q	GE	57.5	55.0	45.0	52.5	20.3	1.2	20	1600	20.0	4.0	9.4	35	15
90.0	600	FE52GE7Q0906*B	Q	GE	57.5	55.0	45.0	52.5	20.3	1.2	20	1800	24.0	4.0	6.5	35	15
100.0	600	FE52GD7Q107*B	Q	GD	57.5	53.0	50.0	52.5	20.3	1.2	20	2000	26.0	4.0	5.5	35	15
110.0	600	FE52GD7Q0117*B	Q	GD	57.5	53.0	50.0	52.5	20.3	1.2	20	2200	28.0	3.5	5.5	35	15
120.0	600	FE52GF7Q0127*B	Q	GF	57.5	60.0	35.0	52.5	20.3	1.2	20	2400	30.0	3.4	4.9	35	20
130.0	600	FE52GH7Q0137*B	Q	GH	57.5	65.0	35.0	52.5	20.3	1.2	20	2600	32.0	3.3	4.4	35	20
140.0	600	FE52GK7Q0147*B	Q	GK	57.5	70.0	35.0	52.5	20.3	1.2	20	2800	34.0	3.2	4.1	35	20
140.0	600	FE52GI7Q0147*B	Q	GI	57.5	65.0	45.0	52.5	20.3	1.2	20	2800	34.0	3.2	4.1	35	15
150.0	600	FE52GL7Q0157*B	Q	GL	57.5	80.0	35.0	52.5	20.3	1.2	20	3000	36.0	3.0	3.9	35	20
					Voltage V _{ndc} 700V			Voltage Code A									
15.0	700	FE37FI7A0156*A	A	FI	42.5	33.5	22.0	37.5	10.2	1.2	35	525	10.0	8.0	18.8	30	49
15.0	700	FE37F67A0156*A	A	F6	42.5	40.0	20.0	37.5	10.2	1.2	35	525	10.0	8.0	18.8	30	56
20.0	700	FE37FL7A0206*A	A	FL	42.5	37.0	28.0	37.5	10.2	1.2	35	700	12.0	7.5	13.9	30	42
22.0	700	FE37F87A0226*A	A	F8	42.5	44.0	24.0	37.5	10.2	1.2	35	770	14.0	6.5	11.8	30	49
25.0	700	FE37F87A0256*A	A	F8	42.5	44.0	24.0	37.5	10.2	1.2	35	875	16.0	6.0	9.8	30	49
30.0	700	FE37F97A0306*B	A	F9	42.5	45.0	30.0	37.5	20.3	1.2	35	1050	16.0	5.8	10.1	30	35
30.0	700	FE52G67A0306*B	A	G6	57.5	22.0	43.0	52.5	20.3	1.2	20	600	12.0	8.5	12.3	35	15
35.0	700	FE37FN7A0356*B	A	FN	42.5	50.0	35.0	37.5	20.3	1.2	35	1225	20.0	5.5	6.8	30	28
40.0	700	FE52GA7A0406*B	A	GA	57.5	45.0	30.0	52.5	20.3	1.2	20	800	14.0	5.0	15.3	35	25
45.0	700	FE52GA7A0456*B	A	GA	57.5	45.0	30.0	52.5	20.3	1.2	20	900	15.5	5.0	12.5	35	25
50.0	700	FE52GC7A0506*B	A	GC	57.5	50.0	35.0	52.5	20.3	1.2	20	1000	15.0	4.8	13.9	35	20
55.0	700	FE52GC7A0556*B	A	GC	57.5	50.0	35.0	52.5	20.3	1.2	20	1100	16.0	4.5	13.0	35	20
60.0	700	FE52GC7A0606*B	A	GC	57.5	50.0	35.0	52.5	20.3	1.2	20	1200	18.0	4.0	11.6	35	20
65.0	700	FE52GE7A0656*B	A	GE	57.5	55.0	45.0	52.5	20.3	1.2	20	1300	20.0	4.0	9.4	35	15
70.0	700	FE52GE7A0706*B	A	GE	57.5	55.0	45.0	52.5	20.3	1.2	20	1400	20.0	3.8	9.9	35	15
75.0	700	FE52GE7A0756*B	A	GE	57.5	55.0	45.0	52.5	20.3	1.2	20	1500	20.0	3.8	9.9	35	15
80.0	700	FE52GE7A0806*B	A	GE	57.5	55.0	45.0	52.5	20.3	1.2	20	1600	22.0	3.5	8.9	35	15
80.0	700	FE52GF7A0806*B	A	GF	57.5	60.0	35.0	52.5	20.3	1.2	20	1600	23.0	3.4	8.3	35	20
90.0	700	FE52GE7A0906*B	A	GE	57.5	55.0	45.0	52.5	20.3	1.2	20.0	1800	24.0	3.5	7.4	35	15
90.0	700	FE52GF7A0906*B	A	GF	57.5	60.0	35.0	52.5	20.3	1.2	20	1800	24.0	3.5	7.4	35	20
100.0	700	FE52GH7A0107*B	A	GH	57.5	65.0	35.0	52.5	20.3	1.2	20	2000	26.0	3.5	6.3	35	20
110.0	700	FE52GK7A0117*B	A	GK	57.5	70.0	35.0	52.5	20.3	1.2	20	2200	28.0	3.4	5.6	35	20
120.0	700	FE52GL7A0127*B	A	GL	57.5	80.0	35.0	52.5	20.3	1.2	20	2400	30.0	3.0	5.6	35	20
130.0	700	FE52GI7A0137*B	A	GI	57.5	65.0	45.0	52.5	20.3	1.2	20	2600	32.0	2.8	5.2	35	15
					Voltage V _{ndc} 800V			Voltage Code B									
15.0	800	FE37F67B0156*A	B	F6	42.5	40.0	20.0	37.5	10.2	1.2	35	525	10.0	8.0	18.8	30	56
20.0	800	FE37FL7B0206*A	B	FL	42.5	37.0	28.0	37.5	10.2	1.2	35	700	12.0	7.0	14.9	30	42
20.0	800	FE37F87B0206*A	B	F8	42.5	44.0	24.0	37.5	10.2	1.2	35	700	13.5	6.5	12.7	30	49
22.0	800	FE37F87B0226*A	B	F8	42.5	44.0	24.0	37.5	10.2	1.2	35	770	14.0	6.0	12.8	30	49
25.0	800	FE37F97B0256*B	B	F9	42.5	45.0	30.0	37.5	20.3	1.2	35	875	14.0	5.5	13.9	30	35
30.0	800	FE37F97B0306*B	B	F9	42.5	45.0	30.0	37.5	20.3	1.2	35	1050	16.0	4.5	13.0	30	35
35.0	800	FE52GA7B0356*B	B	GA	57.5	45.0	30.0	52.5	20.3	1.2	20	700	14.2	6.5	11.4	35	25
40.0	800	FE52GA7B0406*B	B	GA	57.5	45.0	30.0	52.5	20.3	1.2	20	800	14.0	6.0	12.8	35	25
45.0	800	FE52GA7B0456*B	B	GA	57.5	45.0	30.0	52.5	20.3	1.2	20	900	15.5	5.5	11.4	35	25

DC FILTERING

FE - THB *RoHS Compliant

RATING & PART NUMBER REFERENCE

Cap	Rated Voltage	PN	Voltage Code	Case Code	Dimensions						dv/dt	Peak Current	I _{rms}	ESR 10KHz	R _{th}	ESL	SPQ
					W ± 0.5	H ± 0.5	T ± 0.5	P1 ± 1.0	P2 ± 1.0	d ± 0.05							
					mm	mm	mm	mm	mm	mm							
47.0	800	FE52GC7B0476*B	B	GC	57.5	50.0	35.0	52.5	20.3	1.2	20	940	17.5	5.0	9.8	35	20
50.0	800	FE52GC7B0506*B	B	GC	57.5	50.0	35.0	52.5	20.3	1.2	20	1000	16.0	5.0	11.7	35	20
55.0	800	FE52GC7B0556*B	B	GC	57.5	50.0	35.0	52.5	20.3	1.2	20	1100	17.0	4.6	11.3	35	20
65.0	800	FE52GF7B0656*B	B	GF	57.5	60.0	35.0	52.5	20.3	1.2	20	1300	19.0	4.0	10.4	35	20
65.0	800	FE52GE7B0656*B	B	GE	57.5	55.0	45.0	52.5	20.3	1.2	20	1300	20.0	4.0	9.4	35	15
70.0	800	FE52GE7B0706*B	B	GE	57.5	55.0	45.0	52.5	20.3	1.2	20	1400	20.0	3.8	9.9	35	15
70.0	800	FE52GF7B0706*B	B	GF	57.5	60.0	35.0	52.5	20.3	1.2	20	1400	20.0	3.8	9.9	35	20
75.0	800	FE52GE7B0756*B	B	GE	57.5	55.0	45.0	52.5	20.3	1.2	20	1500	22.0	3.8	8.2	35	15
75.0	800	FE52GH7B0756*B	B	GH	57.5	65.0	35.0	52.5	20.3	1.2	20	1500	22.0	3.8	8.2	35	20
80.0	800	FE52GI7B0806*B	B	GI	57.5	65.0	45.0	52.5	20.3	1.2	20	1600	23.0	3.5	8.1	35	15
80.0	800	FE52GK7B0806*B	B	GK	57.5	70.0	35.0	52.5	20.3	1.2	20	1600	23.0	3.5	8.1	35	20
90.0	800	FE52GI7B0906*B	B	GI	57.5	65.0	45.0	52.5	20.3	1.2	20	1800	25.0	3.3	7.3	35	15
90.0	800	FE52GL7B0906*B	B	GL	57.5	80.0	35.0	52.5	20.3	1.2	20	1800	25.0	3.3	7.3	35	20
100.0	800	FE52GI7B0107*B	B	GI	57.5	65.0	45.0	52.5	20.3	1.2	20	2000	28.0	3.2	6.0	35	15
					Voltage Vndc 900V			Voltage Code C									
10.0	900	FE37F67C0106*A	C	F6	42.5	40.0	20.0	37.5	10.2	1.2	35	350	9.5	11.5	14.5	30	56
15.0	900	FE37F87C0156*A	C	F8	42.5	44.0	24.0	37.5	10.2	1.2	35	525	12.0	7.5	13.9	30	49
18.0	900	FE37F87C0186*A	C	F8	42.5	44.0	24.0	37.5	10.2	1.2	35	630	12.0	7.5	13.9	30	49
20.0	900	FE37F97C0206*B	C	F9	42.5	45.0	30.0	37.5	20.3	1.2	35	700	15.0	5.5	12.1	30	35
20.0	900	FE52G67C0206*B	C	G6	57.5	22.0	43.0	52.5	20.3	1.2	20	400	12.0	8.6	12.1	35	15
25.0	900	FE37F97C0256*B	C	F9	42.5	45.0	30.0	37.5	20.3	1.2	35	875	17.0	5.5	9.4	30	35
30.0	900	FE37FN7C0306*B	C	FN	42.5	50.0	35.0	37.5	20.3	1.2	35	1050	19.0	5.0	8.3	30	28
30.0	900	FE52GA7C0306*B	C	GA	57.5	45.0	30.0	52.5	20.3	1.2	20	600	15.0	5.5	12.1	35	25
35.0	900	FE52GC7C0356*B	C	GC	57.5	50.0	35.0	52.5	20.3	1.2	20	700	15.5	5.5	11.4	35	20
40.0	900	FE52GC7C0406*B	C	GC	57.5	50.0	35.0	52.5	20.3	1.2	20	800	16.0	6.5	9.0	35	20
50.0	900	FE52GC7C0506*B	C	GC	57.5	50.0	35.0	52.5	20.3	1.2	20	1000	18.0	3.6	12.9	35	20
55.0	900	FE52GF7C0556*B	C	GF	57.5	60.0	35.0	52.5	20.3	1.2	20	1100	19.0	3.5	11.9	35	20
55.0	900	FE52GE7C0556*B	C	GE	57.5	55.0	45.0	52.5	20.3	1.2	20	1100	20.0	3.4	11.0	35	15
60.0	900	FE52GE7C0606*B	C	GE	57.5	55.0	45.0	52.5	20.3	1.2	20	1200	20.0	3.4	11.0	35	15
65.0	900	FE52GK7C0656*B	C	GK	57.5	70.0	35.0	52.5	20.3	1.2	20	1300	22.0	3.3	9.4	35	20
70.0	900	FE52GE7C0706*B	C	GE	57.5	55.0	45.0	52.5	20.3	1.2	20	1400	24.0	3.2	8.1	35	15
70.0	900	FE52GL7C0706*B	C	GL	57.5	80.0	35.0	52.5	20.3	1.2	20	1400	24.0	3.2	8.1	35	20
80.0	900	FE52GI7C0806*B	C	GI	57.5	65.0	45.0	52.5	20.3	1.2	20	1600	25.0	3.2	7.5	35	15
					Voltage Vndc 1000V			Voltage Code K									
10.0	1000	FE37F67K0106*A	K	F6	42.5	40.0	20.0	37.5	10.2	1.2	40	400	9.5	11.5	14.5	30	56
12.0	1000	FE37F87K0126*A	K	F8	42.5	44.0	24.0	37.5	10.2	1.2	40	480	10.5	9.0	15.1	30	49
15.0	1000	FE37F87K0156*A	K	F8	42.5	44.0	24.0	37.5	10.2	1.2	40	600	12.0	7.5	13.9	30	49
15.0	1000	FE37F97K0156*B	K	F9	42.5	45.0	30.0	37.5	20.3	1.2	40	600	14.0	7.5	10.2	30	35
15.0	1000	FE52G67K0156*B	K	G6	57.5	22.0	43.0	52.5	20.3	1.2	40	600	12.0	8.5	12.3	35	15
20.0	1000	FE37F97K0206*B	K	F9	42.5	45.0	30.0	37.5	20.3	1.2	40	800	15.0	6.5	10.3	30	35
25.0	1000	FE37FN7K0256*B	K	FN	42.5	50.0	35.0	37.5	20.3	1.2	40	1000	18.0	5.5	8.4	30	28
30.0	1000	FE52GA7K0306*B	K	GA	57.5	45.0	30.0	52.5	20.3	1.2	25	750	15.0	5.5	12.1	35	25
35.0	1000	FE52GC7K0356*B	K	GC	57.5	50.0	35.0	52.5	20.3	1.2	25	875	16.0	5.5	10.7	35	20
40.0	1000	FE52GC7K0406*B	K	GC	57.5	50.0	35.0	52.5	20.3	1.2	25	1000	16.0	5.0	11.7	35	20
40.0	1000	FE52GE7K0406*B	K	GE	57.5	55.0	45.0	52.5	20.3	1.2	25	1000	17.0	5.0	10.4	35	15
50.0	1000	FE52GE7K0506*B	K	GE	57.5	55.0	45.0	52.5	20.3	1.2	25	1250	19.0	4.5	9.2	35	15
50.0	1000	FE52GH7K0506*B	K	GH	57.5	65.0	35.0	52.5	20.3	1.2	25	1250	19.0	4.5	9.2	35	20
55.0	1000	FE52GK7K0556*B	K	GK	57.5	70.0	35.0	52.5	20.3	1.2	25	1375	20.0	4.4	8.5	35	20
60	1000	FE52GL7K0606*B	K	GL	57.5	80.0	35.0	52.5	20.3	1.2	25	1500	22.0	4.0	7.7	35	20
60	1000	FE52GI7K0606*B	K	GI	57.5	65.0	45.0	52.5	20.3	1.2	25	1500	22.0	4.0	7.7	35	15
					Voltage Vndc 1100V			Voltage Code L									
6.8	1100	FE37FI7L0685*A	L	FI	42.5	33.5	22.0	37.5	10.2	1.2	40	272	12.0	13.5	7.7	30	49
8.0	1100	FE37F67L0805*A	L	F6	42.5	40.0	20.0	37.5	10.2	1.2	40	320	12.5	12.5	7.7	30	56
8.0	1100	FE37FK7L0805*A	L	FK	42.5	37.0	22.0	37.5	10.2	1.2	40	320	12.5	12.5	7.7	30	49
9.0	1100	FE37FK7L0905*A	L	FK	42.5	37.0	22.0	37.5	10.2	1.2	40	360	12.8	12.2	7.5	30	49
10.0	1100	FE37F87L0106*A	L	F8	42.5	44.0	24.0	37.5	10.2	1.2	40	400	15.0	8.5	7.8	30	49
12.0	1100	FE37F97L0126*B	L	F9	42.5	45.0	30.0	37.5	20.3	1.2	40	480	15.5	7.5	8.3	30	35

DC FILTERING

FE - THB *RoHS Compliant

RATING & PART NUMBER REFERENCE

Cap	Rated Voltage	PN	Voltage Code	Case Code	Dimensions						dv/dt	Peak Current	I _{rms}	ESR 10KHz	R _{th}	ESL	SPQ	
					W	H	T	P1	P2	d								
					± 0.5	± 0.5	± 0.5	± 1.0	± 1.0	± 0.05								
uF	V									V/us	A	A	mΩ	°C/W	nH	pcs		
15.0	1100	FE37F97L0156*B	L	F9	42.5	45.0	30.0	37.5	20.3	1.2	40	600	16.0	7.0	8.4	30	35	
18.0	1100	FE37FN7L0186*B	L	FN	42.5	50.0	35.0	37.5	20.3	1.2	40	720	15.5	7.5	8.3	30	28	
20.0	1100	FE37FN7L0206*B	L	FN	42.5	50.0	35.0	37.5	20.3	1.2	40	800	16.5	7.2	7.7	30	28	
20.0	1100	FE52GA7L0206*B	L	GA	57.5	45.0	30.0	52.5	20.3	1.2	25	500	12.0	8.5	12.3	35	25	
25.0	1100	FE52GC7L0256*B	L	GC	57.5	50.0	35.0	52.5	20.3	1.2	25	625	13.0	8.2	10.8	35	20	
30.0	1100	FE52GC7L0306*B	L	GC	57.5	50.0	35.0	52.5	20.3	1.2	25	750	15.0	5.0	13.3	35	20	
35.0	1100	FE52GF7L0356*B	L	GF	57.5	60.0	35.0	52.5	20.3	1.2	25	875	16.0	4.9	12.0	35	20	
40.0	1100	FE52GH7L0406*B	L	GH	57.5	65.0	35.0	52.5	20.3	1.2	25	1000	17.0	5.5	9.4	35	20	
40.0	1100	FE52GE7L0406*B	L	GE	57.5	55.0	45.0	52.5	20.3	1.2	25	1000	17.0	5.5	9.4	35	15	
45.0	1100	FE52GK7L0456*B	L	GK	57.5	70.0	35.0	52.5	20.3	1.2	25	1125	18.0	5.4	8.6	35	20	
50.0	1100	FE52GI7L0506*B	L	GI	57.5	65.0	45.0	52.5	20.3	1.2	25	1250	19.5	5.2	7.6	35	15	
					Voltage V _{ndc} 1200V			Voltage Code P										
7.0	1200	FE37FK7P0705*A	P	FK	42.5	37.0	22.0	37.5	10.2	1.2	45	315	8.0	15.2	15.4	30	49	
8.0	1200	FE37F87P0805*A	P	F8	42.5	44.0	24.0	37.5	10.2	1.2	45	360	9.0	12.5	14.8	30	49	
10.0	1200	FE37F87P0106*A	P	F8	42.5	44.0	24.0	37.5	10.2	1.2	45	450	10.0	10.5	14.3	30	49	
10.0	1200	FE37F97P0106*B	P	F9	42.5	45.0	30.0	37.5	20.3	1.2	45	450	12.0	8.0	13.0	30	35	
15.0	1200	FE37FN7P0156*B	P	FN	42.5	50.0	35.0	37.5	20.3	1.2	45	675	15.0	6.5	10.3	30	28	
20.0	1200	FE52GA7P0206*B	P	GA	57.5	45.0	30.0	52.5	20.3	1.2	30	600	13.0	8.5	10.4	35	25	
25.0	1200	FE52GC7P0256*B	P	GC	57.5	50.0	35.0	52.5	20.3	1.2	30	750	15.0	6.5	10.3	35	20	
30.0	1200	FE52GE7P0306*B	P	GE	57.5	55.0	45.0	52.5	20.3	1.2	30	900	17.0	5.5	9.4	35	15	
30.0	1200	FE52GF7P0306*B	P	GF	57.5	60.0	35.0	52.5	20.3	1.2	30	900	17.0	5.5	9.4	35	20	
35.0	1200	FE52GE7P0356*B	P	GE	57.5	55.0	45.0	52.5	20.3	1.2	30	1050	18.0	5.0	9.3	35	15	
35.0	1200	FE52GK7P0356*B	P	GK	57.5	70.0	35.0	52.5	20.3	1.2	30	1050	18.0	5.0	9.3	35	20	
40.0	1200	FE52GI7P0406*B	P	GI	57.5	65.0	45.0	52.5	20.3	1.2	30	1200	20.0	4.5	8.3	35	15	
45.0	1200	FE52GI7P0456*B	P	GI	57.5	65.0	45.0	52.5	20.3	1.2	30	1350	22.0	4.3	7.2	35	15	

Архангельск (8182)63-90-72
 Астана (7172)727-132
 Астрахань (8512)99-46-04
 Барнаул (3852)73-04-60
 Белгород (4722)40-23-64
 Брянск (4832)59-03-52
 Владивосток (423)249-28-31
 Волгоград (844)278-03-48
 Вологда (8172)26-41-59
 Воронеж (473)204-51-73
 Екатеринбург (343)384-55-89
 Иваново (4932)77-34-06

Ижевск (3412)26-03-58
 Иркутск (395)279-98-46
 Казань (843)206-01-48
 Калининград (4012)72-03-81
 Калуга (4842)92-23-67
 Кемерово (3842)65-04-62
 Киров (8332)68-02-04
 Краснодар (861)203-40-90
 Красноярск (391)204-63-61
 Курск (4712)77-13-04
 Липецк (4742)52-20-81
 Киргизия (996)312-96-26-47

Магнитогорск (3519)55-03-13
 Москва (495)268-04-70
 Мурманск (8152)59-64-93
 Набережные Челны (8552)20-53-41
 Нижний Новгород (831)429-08-12
 Новокузнецк (3843)20-46-81
 Новосибирск (383)227-86-73
 Омск (3812)21-46-40
 Орел (4862)44-53-42
 Оренбург (3532)37-68-04
 Пенза (8412)22-31-16
 Россия (495)268-04-70

Пермь (342)205-81-47
 Ростов-на-Дону (863)308-18-15
 Рязань (4912)46-61-64
 Самара (846)206-03-16
 Санкт-Петербург (812)309-46-40
 Саратов (845)249-38-78
 Севастополь (8692)22-31-93
 Симферополь (3652)67-13-56
 Смоленск (4812)29-41-54
 Сочи (862)225-72-31
 Ставрополь (8652)20-65-13
 Казахстан (772)734-952-31

Сургут (3462)77-98-35
 Тверь (4822)63-31-35
 Томск (3822)98-41-53
 Тула (4872)74-02-29
 Тюмень (3452)66-21-18
 Ульяновск (8422)24-23-59
 Уфа (347)229-48-12
 Хабаровск (4212)92-98-04
 Челябинск (351)202-03-61
 Череповец (8202)49-02-64
 Ярославль (4852)69-52-93

<https://avx.nt-rt.ru/> || axv@nt-rt