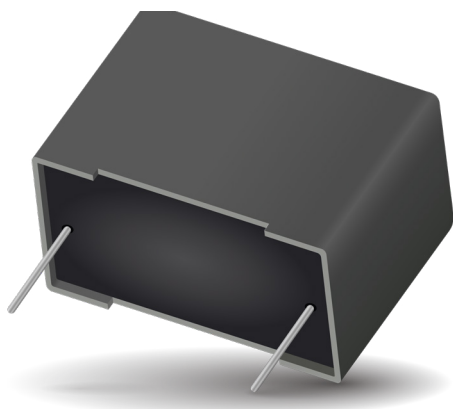
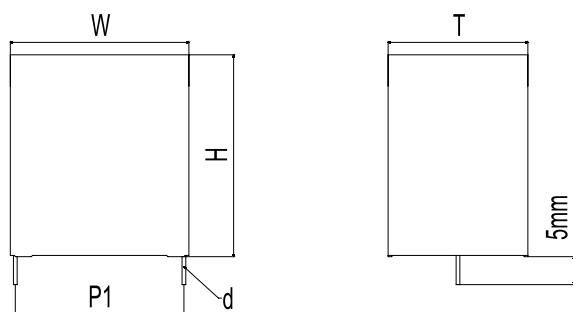


DC FILTERING

FB* RoHS Compliant



DIMENSIONS



STANDARDS

- IEC 61071-1: Power electronic capacitors
- IEC 61071-2: Power electronic capacitors
- IEC 60384-16: Fixed metallized polypropylene film dielectric DC capacitors
- IEC 60384-16-1: Fixed metallized polypropylene film dielectric DC capacitors Assessment level E
- IEC 60384-17: Fixed metallized polypropylene film dielectric AC and pulse capacitors
- IEC 60384-17-1: Fixed metallized polypropylene film dielectric AC and pulse capacitors
- EN CZDS2.E514026 Certificate: E514026 (approved by UL)

HOW TO ORDER

FB	27	G*	6	K	0685	K	A
Series FB	Pitch 27 = 27.5mm 37 = 37.5mm 52 = 52.5mm	Case Size E* for P=27.5mm F* for P=37.5mm G* for P=52.5mm	Type 6 = Polypropylene 7 = Polypropylene THB 8 = Polypropylene Low Profile	Voltage I = 450V H = 500V J = 550V Q = 600V A = 700V B = 800V C = 900V K = 1000V L = 1100V P = 1200V	Cap µF Code	Tolerance J = ± 5% K = ±10% M = ±20%	Pitch P2 A = 10.2 B = 20.3 C = 2 pins

(1) For Type, 6 for Polypropylene, 7 for THB Products and 8 for Low Profile Products

Архангельск (8182)63-90-72
Астана (7172)727-132
Астрахань (8512)99-46-04
Барнаул (3852)73-04-60
Белгород (4722)40-23-64
Брянск (4832)59-03-52
Владивосток (423)249-28-31
Волгоград (844)278-03-48
Вологда (8172)26-41-59
Воронеж (473)204-51-73
Екатеринбург (343)384-55-89
Иваново (4932)77-34-06

Ижевск (3412)26-03-58
Иркутск (395)279-98-46
Казань (843)206-01-48
Калининград (4012)72-03-81
Калуга (4842)92-23-67
Кемерово (3842)65-04-62
Киров (8332)68-02-04
Краснодар (861)203-40-90
Красноярск (391)204-63-61
Курск (4712)77-13-04
Липецк (4742)52-20-81
Киргизия (996)312-96-26-47

Магнитогорск (3519)55-03-13
Москва (495)268-04-70
Мурманск (8152)59-64-93
Набережные Челны (8552)20-53-41
Нижний Новгород (831)429-08-12
Новокузнецк (3843)20-46-81
Новосибирск (383)227-86-73
Омск (3812)21-46-40
Орел (4862)44-53-42
Оренбург (3532)37-68-04
Пенза (8412)22-31-16
Россия (495)268-04-70

Пермь (342)205-81-47
Ростов-на-Дону (863)308-18-15
Рязань (4912)46-61-64
Самара (846)206-03-16
Санкт-Петербург (812)309-46-40
Саратов (845)249-38-78
Севастополь (8692)22-31-93
Симферополь (3652)67-13-56
Смоленск (4812)29-41-54
Сочи (862)225-72-31
Ставрополь (8652)20-65-13
Казахстан (772)734-952-31

Сургут (3462)77-98-35
Тверь (4822)63-31-35
Томск (3822)98-41-53
Тула (4872)74-02-29
Тюмень (3452)66-21-18
Ульяновск (8422)24-23-59
Уфа (347)229-48-12
Хабаровск (4212)92-98-04
Челябинск (351)202-03-61
Череповец (8202)49-02-64
Ярославль (4852)69-52-93

GENERAL DESCRIPTION

The FB series uses a non-impregnated metallized polypropylene dielectric specially treated to have a very high dielectric strength in operation condition up to 105°C.

FB series performance characteristics make them a viable alternative to aluminum electrolytic technology due to much lower ESR and much higher surge voltage capability (dv/dt).

GENERAL CHARACTERISTICS

- Able to Withstand Harsh Environment Conditions
- Low Profile Available

FEATURES & BENEFITS

- High Performance DC Filter
- Low ESR, High Peak & RMS Current
- THB Compliance
- Able to Withstand Harsh Environment Conditions (THB Compliance)
- Low Profile Available

APPLICATIONS

- Renewable Energy Inverter
- OBC & Automotive Applications
- Motor Drives
- Industrial Power Supply
- UPS System

OPERATING TEMPERATURE RANGE

- Operating temperature range: -40°C to +100°C

PACKAGING MATERIAL

Self-extinguishing plastic case (V0 = in accordance with UL 94) filled thermosetting resin.

Self-extinguishing thermosetting resin (V0 = in accordance with UL 94; I3F2 = in accordance with NF F 16-101).

LIFE EXPECTANCY

One unique feature of this technology (versus aluminum electrolytics) is how the capacitor reacts at the end of its lifetime.

Unlike aluminum electrolytic film capacitors do not have a catastrophic failure mode. Film capacitors simply experience a parametric loss of capacitance of about 2% from initial value, with no risk of short circuit.

The capacitor continues to be functional even after this 2% decrease.

DC FILTERING

FB* RoHS Compliant

POLYPROPYLENE DIELECTRIC FOR INDUSTRIAL DC FILTERING

These capacitors have been designed primarily for high and medium power DC filtering applications.

ELECTRICAL CHARACTERISTICS – POLYPROPYLENE DIELECTRIC

Items	Characteristics
Application	DC Filtering / DC Link
Reference Standard	IEC 61071
Climatic Category	40/85/56 IEC 60068-1
Operating Temperature Range	-40~ +105°C (+85°C observing voltage must be de-rating at 1.35% per °C)
Upper Temperature Tmax	+85°C
Lower Temperature Tmin	-40°C
Rated Voltage	450Vdc ~ 1200Vdc
Capacitance Range	1µF ~ 80µF
Capacitance Tolerance	±5% or ±10% at +25°C
Dissipation Factor (DF)	≤ 0.002 (0.20%) at 1 KHz. C≤20µF at +25°C
	≤ 0.003 (0.30%) at 1 KHz. C>20µF at +25°C
Test Voltage Between Terminals	1.5 x rated voltage for 10s (terminal to terminal)
Test Voltage Terminal to Case	3.0kVrms 50 Hz for 10 sec at +25°C
Insulation Resistance	IR x C≥30,000 Seconds at 100VDC 1 minute at +25°C
Life Expectancy	100,000 hours at Un @ Hot-Spot temperature T=+70°C
Protection	Solvent resistant plastic case UL94 V-0
	Thermosetting resin sealing UL 94 V-0 compliant
Installation	Any position
Leads	Tinned copper wires, standard lead wire length 5 ±1mm
Packaging	Packed in cardboard boxes with protection for the terminals
RoHS Compliant	Compliant with the restricted substance requirements of Directive 2011/65/EU
Storage Conditions	Storage time: ≤ 24 months from the date marked on the label package
	Temperature and relative humidity should be -10°C ~ +40°C and not more than 75%RH.
	RH ≤ 85% for 30 days randomly distributed throughout the year
Humidity Test	Test conditions & performance:
	Temperature: +40°C±2°C Relative humidity (RH): 93% ±2%
	Test duration: 56 days
	Capacitance change: ≤±5% DF change (tgδ): ≤50 X 10 ⁻⁴ at 1KHz
	Insulation resistance: ≥50% of initial limit
Endurance Test	Test conditions & performance:
	Temperature: +85°C±2°C Voltage applied: 1.3 X VR (d.c.)
	Test duration: 1000 hours
	Capacitance change: ≤±5% DF change (tgδ): ≤50 X 10 ⁻⁴ at 1KHz
	Insulation resistance: ≥50% of initial limit

DC FILTERING

FB - Standard *RoHS Compliant

CASE CODE

mm

Case Code	Dimensions			
	W ± 0.5	H ± 0.5	T ± 0.5	P1 ± 1.0
	mm	mm	mm	mm
EC	32.0	18.0	9.0	27.5
E1	32.0	20.0	11.0	27.5
E2	32.0	22.0	13.0	27.5
EE	32.0	24.5	15.0	27.5
E3	32.0	28.0	14.0	27.5
E4	32.0	28.0	18.0	27.5
EG	32.0	31.0	21.0	27.5
E6	32.0	33.0	18.0	27.5
EI	32.0	35.0	20.0	27.5
E9	32.0	37.0	22.0	27.5
FH	42.5	18.0	24.0	37.5
F3	42.5	32.0	19.0	37.5
FI	42.5	33.5	22.0	37.5
F4	42.5	36.0	19.0	37.5
F5	42.5	38.0	20.0	37.5
F6	42.5	40.0	20.0	37.5
F8	42.5	44.0	24.0	37.5
F9	42.5	45.0	30.0	37.5
FP	42.5	57.0	30.0	37.5
G9	57.5	45.0	25.0	52.5
GA	57.5	45.0	30.0	52.5
GC	57.5	50.0	35.0	52.5

RATING & PART NUMBER REFERENCE

Cap	Rated Voltage	PN	Voltage Code	Case Code	Dimensions					dv/dt	Peak Current	I _{rms}	ESR 10KHz	R _{th}	ESL	SPQ
					W ± 0.5	H ± 0.5	T ± 0.5	P1 ± 1.0	d ± 0.05							
					mm	mm	mm	mm	mm							
Voltage V_{ndc} 450V																
Voltage Code I																
1.0	450	FB27EC6I0105*C	I	EC	32.0	18.0	9.0	27.5	0.8	60	60	2.5	45.0	53.3	25	180
2.0	450	FB27EC6I0205*C	I	EC	32.0	18.0	9.0	27.5	0.8	60	120	3.0	30.0	55.6	25	180
3.0	450	FB27E16I0305*C	I	E1	32.0	20.0	11.0	27.5	0.8	60	180	4.0	20.0	46.9	25	150
4.0	450	FB27E16I0405*C	I	E1	32.0	20.0	11.0	27.5	0.8	60	240	4.0	18.0	52.1	25	150
5.0	450	FB27E16I0505*C	I	E1	32.0	20.0	11.0	27.5	0.8	60	300	5.0	12.0	50.0	25	150
5.0	450	FB27E26I0505*C	I	E2	32.0	22.0	13.0	27.5	0.8	60	300	5.5	11.0	45.1	25	120
10.0	450	FB27E36I0106*C	I	E3	32.0	28.0	14.0	27.5	0.8	60	600	7.5	8.5	31.4	25	110
10.0	450	FB27E46I0106*C	I	E4	32.0	28.0	18.0	27.5	0.8	60	600	9.0	8.0	23.1	25	90
12.0	450	FB27E66I0126*C	I	E6	32.0	33.0	18.0	27.5	0.8	60	720	10.0	7.0	21.4	25	90
15.0	450	FB27E96I0156*C	I	E9	32.0	37.0	22.0	27.5	0.8	60	900	11.5	6.0	18.9	25	70
18.0	450	FB27E96I0186*C	I	E9	32.0	37.0	22.0	27.5	0.8	60	1080	10.0	6.0	25.0	25	70
20.0	450	FB27E96I0206*C	I	E9	32.0	37.0	22.0	27.5	0.8	60	1200	11.0	5.0	24.8	25	70
22.0	450	FB27E96I0226*C	I	E9	32.0	37.0	22.0	27.5	0.8	60	1320	12.5	5.0	19.2	25	70
15.0	450	FB37FH6I0156*C	I	FH	42.5	18.0	24.0	37.5	1.0	30	450	9.5	8.5	19.6	30	49
Voltage V_{ndc} 500V																
Voltage Code J																
3.0	550	FB27E16J0305*C	J	E1	32.0	20.0	11.0	27.5	0.8	60	180	4.0	28.0	33.5	25	150
5.0	550	FB27E26J0505*C	J	E2	32.0	22.0	13.0	27.5	0.8	60	300	6.0	14.0	29.8	25	120
8.0	550	FB27E36J0805*C	J	E3	32.0	28.0	14.0	27.5	0.8	60	480	8.5	12.5	16.6	25	110
10.0	550	FB27E66J0106*C	J	E6	32.0	33.0	18.0	27.5	0.8	60	600	10.0	8.0	18.8	25	90
15.0	550	FB27E96J0156*C	J	E9	32.0	37.0	22.0	27.5	0.8	60	900	12.0	6.5	16.0	25	70
15.0	550	FB37FH6J0156*C	J	FH	42.5	18.0	24.0	37.5	0.8	60	900	10.5	6.5	20.9	30	49
Voltage V_{ndc} 600V																
Voltage Code Q																
1.0	600	FB27EC6Q0105*C	Q	EC	32.0	18.0	9.0	27.5	0.8	50	50	2.5	55.0	43.6	25	180
2.0	600	FB27EC6Q0205*C	Q	EC	32.0	18.0	9.0	27.5	0.8	50	100	3.0	35.0	47.6	25	180
3.0	600	FB27E16Q0305*C	Q	E1	32.0	20.0	11.0	27.5	0.8	60	180	4.0	28.0	33.5	25	150
4.0	600	FB27E16Q0405*C	Q	E1	32.0	20.0	11.0	27.5	0.8	60	240	5.0	26.0	23.1	25	150
5.0	600	FB27E26Q0505*C	Q	E2	32.0	22.0	13.0	27.5	0.8	50	250	5.0	17.0	35.3	25	120
5.0	600	FB27E36Q0505*C	Q	E3	32.0	28.0	14.0	27.5	0.8	60	300	6.0	14.5	28.7	25	110

DC FILTERING

FB - Standard *RoHS Compliant

RATING & PART NUMBER REFERENCE

Cap	Rated Voltage	PN	Voltage Code	Case Code	Dimensions					dv/dt	Peak Current	I _{rms}	ESR 10KHz	R _{th}	ESL	SPQ	
					W ± 0.5	H ± 0.5	T ± 0.5	P1 ± 1.0	d ± 0.05								
uF	V				mm	mm	mm	mm	mm	V/us	A	A	mΩ	°C/W	nH	pcs	
6.0	600	FB27EE6Q0605*C	Q	EE	32.0	24.5	15.0	27.5	0.8	50	300	6.0	14.0	29.8	25	110	
7.0	600	FB27EE6Q0705*C	Q	EE	32.0	24.5	15.0	27.5	0.8	50	350	6.0	12.0	34.7	25	110	
8.0	600	FB27E36Q0805*C	Q	E3	32.0	28.0	14.0	27.5	0.8	60	480	7.5	12.0	22.2	25	110	
8.0	600	FB27E46Q0805*C	Q	E4	32.0	28.0	18.0	27.5	0.8	50	400	8.0	9.0	26.0	25	90	
9.0	600	FB27E46Q0905*C	Q	E4	32.0	28.0	18.0	27.5	0.8	50	450	8.0	9.0	26.0	25	90	
10.0	600	FB27E46Q106*C	Q	E4	32.0	28.0	18.0	27.5	0.8	50	500	9.0	8.0	23.1	25	90	
10.0	600	FB27E66Q106*C	Q	E6	32.0	33.0	18.0	27.5	0.8	60	600	8.5	7.5	27.7	25	90	
12.0	600	FB27E66Q126*C	Q	E6	32.0	33.0	18.0	27.5	0.8	60	720	9.5	7.5	22.2	25	90	
12.0	600	FB27E66Q126*C	Q	EG	32.0	31.0	21.0	27.5	0.8	50	600	10.0	7.0	21.4	25	80	
15.0	600	FB27E96Q156*C	Q	E9	32.0	37.0	22.0	27.5	0.8	60	900	10.5	7.5	18.1	25	70	
15.0	600	FB27E16Q156*C	Q	E1	32.0	35.0	20.0	27.5	0.8	50	750	10.0	6.0	25.0	25	80	
10.0	600	FB37F46Q106*C	Q	F4	42.5	36.0	19.0	37.5	1.0	25	250	7.0	14.0	21.9	30	56	
12.0	600	FB37F46Q126*C	Q	F4	42.5	36.0	19.0	37.5	1.0	25	300	8.0	12.0	19.5	30	56	
12.0	600	FB37FH6Q126*C	Q	FH	42.5	18.0	24.0	37.5	1.0	35	420	8.0	9.5	24.7	30	49	
15.0	600	FB37F46Q156*C	Q	F4	42.5	36.0	19.0	37.5	1.0	25	375	9.0	9.0	20.6	30	56	
15.0	600	FB37FH6Q156*C	Q	FH	42.5	18.0	24.0	37.5	1.0	35	525	12.0	6.0	17.4	30	49	
20.0	600	FB37F56Q206*C	Q	F5	42.5	38.0	20.0	37.5	1.0	25	500	11.0	7.0	17.7	30	56	
22.0	600	FB37F56Q226*C	Q	F5	42.5	38.0	20.0	37.5	1.0	25	550	11.0	8.0	15.5	30	56	
25.0	600	FB37F56Q256*C	Q	F5	42.5	38.0	20.0	37.5	1.0	25	625	11.0	7.0	17.7	30	56	
30.0	600	FB37F86Q306*C	Q	F8	42.5	44.0	24.0	37.5	1.0	25	750	13.0	6.0	14.8	30	49	
35.0	600	FB37F96Q356*C	Q	F9	42.5	45.0	30.0	37.5	1.0	25	875	17.0	4.0	13.0	30	35	
40.0	600	FB37F96Q406*C	Q	F9	42.5	45.0	30.0	37.5	1.0	25	1000	17.0	4.0	13.0	30	35	
45.0	600	FB37F96Q456*C	Q	F9	42.5	45.0	30.0	37.5	1.0	25	1125	17.0	4.0	13.0	30	35	
50.0	600	FB37FP6Q506*C	Q	FP	42.5	57.0	30.0	37.5	1.0	25	1250	18.0	3.0	15.4	30	35	
40.0	600	FB52G96Q0406*C	Q	G9	57.5	45.0	25.0	52.5	1.2	14	560	13.0	7.0	12.7	35	30	
45.0	600	FB52G96Q0456*C	Q	G9	57.5	45.0	25.0	52.5	1.2	14	630	13.0	7.0	12.7	35	30	
50.0	600	FB52GA6Q0506*C	Q	GA	57.5	45.0	30.0	52.5	1.2	14	700	15.0	6.0	11.1	35	25	
55.0	600	FB52GA6Q0556*C	Q	GA	57.5	45.0	30.0	52.5	1.2	14	770	15.0	6.0	11.1	35	25	
60.0	600	FB52GA6Q0606*C	Q	GA	57.5	45.0	30.0	52.5	1.2	14	840	15.0	5.0	13.3	35	25	
65.0	600	FB52GC6Q0656*C	Q	GC	57.5	50.0	35.0	52.5	1.2	14	910	18.0	4.0	11.6	35	20	
70.0	600	FB52GC6Q0706*C	Q	GC	57.5	50.0	35.0	52.5	1.2	14	980	18.0	4.5	10.3	35	20	
75.0	600	FB52GC6Q0756*C	Q	GC	57.5	50.0	35.0	52.5	1.2	14	1050	18.0	4.0	11.6	35	20	
80.0	600	FB52GC6Q0806*C	Q	GC	57.5	50.0	35.0	52.5	1.2	14	1120	18.0	4.0	11.6	35	20	
					Voltage V _{ndc} 700V			Voltage Code A									
1.0	700	FB27EC6A0105*C	A	EC	32.0	18.0	9.0	27.5	0.8	60	60	2.5	54.0	44.4	25	180	
2.0	700	FB27EC6A0205*C	A	EC	32.0	18.0	9.0	27.5	0.8	60	120	3.0	35.0	47.6	25	180	
3.0	700	FB27E16A0305*C	A	E1	32.0	20.0	11.0	27.5	0.8	60	180	4.5	28.0	26.5	25	150	
3.3	700	FB27E36A0335*C	A	E3	32.0	28.0	14.0	27.5	0.8	60	198	5.5	26.0	19.1	25	110	
5.0	700	FB27E36A0505*C	A	E3	32.0	28.0	14.0	27.5	0.8	60	300	6.0	14.0	29.8	25	110	
6.0	700	FB27E46A0605*C	A	E4	32.0	28.0	18.0	27.5	0.8	60	360	6.0	14.0	29.8	25	90	
8.0	700	FB27E66A0805*C	A	E6	32.0	33.0	18.0	27.5	0.8	60	480	9.0	10.0	18.5	25	90	
10.0	700	FB27E66A106*C	A	E6	32.0	33.0	18.0	27.5	0.8	60	600	10.0	7.0	21.4	25	90	
10.0	700	FB27E96A106*C	A	E9	32.0	37.0	22.0	27.5	0.8	60	600	12.0	6.5	16.0	25	70	
12.0	700	FB27E96A126*C	A	E9	32.0	37.0	22.0	27.5	0.8	60	720	12.5	6.0	16.0	25	70	
10.0	700	FB37FH6A106*C	A	FH	42.5	18.0	24.0	37.5	1.0	35	350	11.5	7.5	15.1	30	49	
12.0	700	FB37FH6A126*C	A	FH	42.5	18.0	24.0	37.5	1.0	35	420	12.0	7.0	14.9	30	49	
15.0	700	FB37FI6A156*C	A	FI	42.5	33.5	22.0	37.5	1.0	35	525	9.0	9.0	20.6	30	49	
					Voltage V _{ndc} 800V			Voltage Code B									
1.0	800	FB27EC6B0105*C	B	EC	32.0	18.0	9.0	27.5	0.8	60	60	2.0	62.0	60.5	25	180	
2.0	800	FB27E16B0205*C	B	E1	32.0	20.0	11.0	27.5	0.8	60	120	3.5	31.0	39.5	25	150	
2.0	800	FB27EC6B0205*C	B	EC	32.0	18.0	9.0	27.5	0.8	60	120	3.0	35.0	47.6	25	180	
3.0	800	FB27E16B0305*C	B	E1	32.0	20.0	11.0	27.5	0.8	60	180	4.0	23.0	40.8	25	150	
3.0	800	FB27E26B0305*C	B	E2	32.0	22.0	13.0	27.5	0.8	60	180	4.5	21.0	35.3	25	120	
3.3	800	FB27E36B0335*C	B	E3	32.0	28.0	14.0	27.5	0.8	60	198	4.0	25.0	37.5	25	110	
4.0	800	FB27E26B0405*C	B	E2	32.0	22.0	13.0	27.5	0.8	60	240	5.0	17.0	35.3	25	120	
5.0	800	FB27E36B0505*C	B	E3	32.0	28.0	14.0	27.5	0.8	60	300	6.0	12.0	34.7	25	110	
5.0	800	FB27EE6B0505*C	B	EE	32.0	24.5	15.0	27.5	0.8	60	300	6.0	14.0	29.8	25	110	
6.0	800	FB27E46B0605*C	B	E4	32.0	28.0	18.0	27.5	0.8	60	360	7.5	10.5	25.4	25	90	
7.0	800	FB27E46B0705*C	B	E4	32.0	28.0	18.0	27.5	0.8	60	420	8.0	10.0	23.4	25	90	
8.0	800	FB27E46B0805*C	B	E4	32.0	28.0	18.0	27.5	0.8	60	480	8.0	9.0	26.0	25	90	
8.0	800	FB27E66B0805*C	B	E6	32.0	33.0	18.0	27.5	0.8	60	480	9.5	9.5	17.5	25	90	
9.0	800	FB27E66B0905*C	B	E6	32.0	33.0	18.0	27.5	0.8	60	540	10.0	8.5	17.6	25	90	

DC FILTERING

FB - Standard *RoHS Compliant

RATING & PART NUMBER REFERENCE

Cap	Rated Voltage	PN	Voltage Code	Case Code	Dimensions					dv/dt	Peak Current	I _{rms}	ESR 10KHz	R _{th}	ESL	SPQ	
					W ± 0.5	H ± 0.5	T ± 0.5	P1 ± 1.0	d ± 0.05								
uF	V				mm	mm	mm	mm	mm	V/us	A	A	mΩ	°C/W	nH	pcs	
9.0	800	FB27EG6B0905*C	B	EG	32.0	31.0	21.0	27.5	0.8	60	540	10.0	7.5	20.0	25	80	
10.0	800	FB27E96B0106*C	B	E9	32.0	37.0	22.0	27.5	0.8	60	600	11.5	9.5	11.9	25	70	
10.0	800	FB27EG6B0106*C	B	EG	32.0	31.0	21.0	27.5	0.8	60	600	10.0	7.0	21.4	25	80	
12.0	800	FB27E16B0126*C	B	E1	32.0	35.0	20.0	27.5	0.8	60	720	11.0	6.0	20.7	25	80	
10.0	800	FB37F36B0106*C	B	F3	42.5	32.0	19.0	37.5	1.0	35	350	8.0	12.5	18.8	30	56	
10.0	800	FB37F46B0106*C	B	F4	42.5	36.0	19.0	37.5	1.0	35	350	7.0	14.0	21.9	30	56	
12.0	800	FB37F96B0126*C	B	F4	42.5	36.0	19.0	37.5	1.0	35	420	8.0	12.0	19.5	30	56	
15.0	800	FB37F46B0156*C	B	F4	42.5	36.0	19.0	37.5	1.0	35	525	9.0	9.0	20.6	30	56	
20.0	800	FB37F56B0206*C	B	F5	42.5	38.0	20.0	37.5	1.0	35	700	11.0	7.0	17.7	30	56	
22.0	800	FB37F86B0226*C	B	F8	42.5	44.0	24.0	37.5	1.0	35	770	13.0	6.0	14.8	30	49	
25.0	800	FB37F86B0256*C	B	F8	42.5	44.0	24.0	37.5	1.0	35	875	13.0	6.0	14.8	30	49	
30.0	800	FB37F96B0306*C	B	F9	42.5	45.0	30.0	37.5	1.0	35	1050	16.0	5.0	11.7	30	35	
35.0	800	FB37F96B0356*C	B	F9	42.5	45.0	30.0	37.5	1.0	35	1225	17.0	4.0	13.0	30	35	
40.0	800	FB37FP6B0406*C	B	FP	42.5	57.0	30.0	37.5	1.0	35	1400	18.0	3.0	15.4	30	35	
30.0	800	FB52G96B0306*C	B	G9	57.5	45.0	25.0	52.5	1.2	18	540	11.0	9.0	13.8	35	30	
35.0	800	FB52G96B0356*C	B	G9	57.5	45.0	25.0	52.5	1.2	18	630	12.0	8.0	13.0	35	30	
40.0	800	FB52G96B0406*C	B	G9	57.5	45.0	25.0	52.5	1.2	18	720	13.0	7.0	12.7	35	30	
45.0	800	FB52GA6B0456*C	B	GA	57.5	45.0	30.0	52.5	1.2	18	810	14.0	6.0	12.8	35	25	
50.0	800	FB52GA6B0506*C	B	GA	57.5	45.0	30.0	52.5	1.2	18	900	15.0	6.0	11.1	35	25	
55.0	800	FB52GC6B0556*C	B	GC	57.5	50.0	35.0	52.5	1.2	18	990	17.0	5.0	10.4	35	20	
60.0	800	FB52GC6B0606*C	B	GC	57.5	50.0	35.0	52.5	1.2	18	1080	18.0	5.0	9.3	35	20	
65.0	800	FB52GC6B0656*C	B	GC	57.5	50.0	35.0	52.5	1.2	18	1170	19.0	4.0	10.4	35	20	
					Voltage V _{ndc} 900V			Voltage Code C									
1.0	900	FB27EC6C0105*C	C	EC	32.0	18.0	9.0	27.5	0.8	60	60	2.0	63.0	59.5	25	180	
2.0	900	FB27E16C0205*C	C	E1	32.0	20.0	11.0	27.5	0.8	60	120	3.0	25.0	66.7	25	150	
3.0	900	FB27E26C0305*C	C	E2	32.0	22.0	13.0	27.5	0.8	60	180	5.0	18.5	32.4	25	120	
3.3	900	FB27EE6C0335*C	C	EE	32.0	24.5	15.0	27.5	0.8	60	198	5.0	18.5	32.4	25	110	
4.0	900	FB27EE6C0405*C	C	EE	32.0	24.5	15.0	27.5	0.8	65	260	5.0	16.0	37.5	25	110	
5.0	900	FB27E46C0505*C	C	E4	32.0	28.0	18.0	27.5	0.8	60	300	7.0	12.5	24.5	25	90	
6.0	900	FB27E46C0605*C	C	E4	32.0	28.0	18.0	27.5	0.8	65	390	7.0	11.0	27.8	25	90	
6.0	900	FB27E66C0605*C	C	E6	32.0	33.0	18.0	27.5	0.8	60	360	8.0	11.0	21.3	25	90	
7.0	900	FB27E66C0705*C	C	EG	32.0	31.0	21.0	27.5	0.8	65	455	9.0	9.0	20.6	25	80	
8.0	900	FB27E96C0805*C	C	E9	32.0	37.0	22.0	27.5	0.8	60	480	10.5	10.0	13.6	25	70	
8.0	900	FB27E66C0805*C	C	EG	32.0	31.0	21.0	27.5	0.8	65	520	9.0	8.0	23.1	25	80	
9.0	900	FB27E16C0905*C	C	E1	32.0	35.0	20.0	27.5	0.8	65	585	9.0	7.0	26.5	25	80	
10.0	900	FB27E96C0106*C	C	E9	32.0	37.0	22.0	27.5	0.8	60	600	12.0	10.0	10.4	25	70	
10.0	900	FB27E16C0106*C	C	E1	32.0	35.0	20.0	27.5	0.8	65	650	9.0	7.0	26.5	25	80	
9.0	900	FB37F46C0905*C	C	F4	42.5	36.0	19.0	37.5	1.0	35	315	8.0	14.0	16.7	30	56	
10.0	900	FB37F46C0106*C	C	F4	42.5	36.0	19.0	37.5	1.0	35	350	8.0	13.0	18.0	30	56	
10.0	900	FB37F66C0106*C	C	F6	42.5	40.0	20.0	37.5	1.0	35	350	8.5	12.0	17.3	30	56	
12.0	900	FB37F46C0126*C	C	F4	42.5	36.0	19.0	37.5	1.0	35	420	8.0	11.0	21.3	30	56	
15.0	900	FB37F56C0156*C	C	F5	42.5	38.0	20.0	37.5	1.0	35	525	10.0	9.0	16.7	30	56	
15.0	900	FB37F86C0156*C	C	F8	42.5	44.0	24.0	37.5	1.0	35	525	10.5	8.0	17.0	30	49	
18.0	900	FB37F86C0186*C	C	F8	42.5	44.0	24.0	37.5	1.0	35	630	10.5	8.0	17.0	30	49	
20.0	900	FB37F86C0206*C	C	F8	42.5	44.0	24.0	37.5	1.0	35	700	13.0	6.0	14.8	30	49	
20.0	900	FB37F96C0206*C	C	F9	42.5	45.0	30.0	37.5	1.0	35	700	14.0	6.0	12.8	30	35	
22.0	900	FB37F96C0226*C	C	F9	42.5	45.0	30.0	37.5	1.0	35	770	14.0	6.0	12.8	30	35	
25.0	900	FB37F96C0256*C	C	F9	42.5	45.0	30.0	37.5	1.0	35	875	15.0	5.0	13.3	30	35	
30.0	900	FB37FP6C0306*C	C	FP	42.5	57.0	30.0	37.5	1.0	35	1050	17.0	4.5	11.5	30	35	
35.0	900	FB37FP6C0356*C	C	FP	42.5	57.0	30.0	37.5	1.0	35	1225	18.0	3.5	13.2	30	35	
30.0	900	FB52G96C0306*C	C	G9	57.5	45.0	25.0	52.5	1.2	18	540	12.0	8.0	13.0	35	30	
35.0	900	FB52GA6C0356*C	C	GA	57.5	45.0	30.0	52.5	1.2	18	630	13.0	7.0	12.7	35	25	
40.0	900	FB52GA6C0406*C	C	GA	57.5	45.0	30.0	52.5	1.2	18	720	14.0	6.0	12.8	35	25	
45.0	900	FB52GC6C0456*C	C	GC	57.5	50.0	35.0	52.5	1.2	18	810	16.0	6.0	9.8	35	20	
50.0	900	FB52GC6C0506*C	C	GC	57.5	50.0	35.0	52.5	1.2	18	900	17.0	5.0	10.4	35	20	
					Voltage V _{ndc} 1000V			Voltage Code K									
1.0	1000	FB27E16K0105*C	K	E1	32.0	20.0	11.0	27.5	0.8	80	80	2.5	45.0	53.3	25	150	
1.0	1000	FB27EC6K0105*C	K	EC	32.0	18.0	9.0	27.5	0.8	70	70	2.0	65.0	57.7	25	180	
2.0	1000	FB27E26K0205*C	K	E2	32.0	22.0	13.0	27.5	0.8	80	160	3.5	30.0	40.8	25	120	
3.0	1000	FB27EE6K0305*C	K	EE	32.0	24.5	15.0	27.5	0.8	80	240	5.0	25.0	24.0	25	110	
4.0	1000	FB27E46K0405*C	K	E4	32.0	28.0	18.0	27.5	0.8	70	280	6.0	16.0	26.0	25	90	

DC FILTERING

FB - Standard *RoHS Compliant

RATING & PART NUMBER REFERENCE

Cap	Rated Voltage	PN	Voltage Code	Case Code	Dimensions					dv/dt	Peak Current	I _{rms}	ESR 10KHz	R _{th}	ESL	SPQ
					W ± 0.5	H ± 0.5	T ± 0.5	P1 ± 1.0	d ± 0.05							
µF	V				mm	mm	mm	mm	mm	V/us	A	A	mΩ	°C/W	nH	pcs
5.0	1000	FB27E66K0505°C	K	E6	32.0	33.0	18.0	27.5	0.8	80	400	8.0	14.0	16.7	25	90
5.0	1000	FB27EG6K0505°C	K	EG	32.0	31.0	21.0	27.5	0.8	70	350	7.0	13.0	23.5	25	80
6.0	1000	FB27EG6K0605°C	K	EG	32.0	31.0	21.0	27.5	0.8	70	420	8.0	10.0	23.4	25	80
7.0	1000	FB27E16K0705°C	K	E1	32.0	35.0	20.0	27.5	0.8	70	490	9.0	9.0	20.6	25	80
8.0	1000	FB27E96K0805°C	K	E9	32.0	37.0	22.0	27.5	0.8	80	640	10.0	12.0	12.5	25	70
5.0	1000	FB37F46K0505°C	K	F4	42.5	36.0	19.0	37.5	1.0	35	175	6.0	21.0	19.8	30	56
6.0	1000	FB37F46K0605°C	K	F4	42.5	36.0	19.0	37.5	1.0	35	210	6.0	18.0	23.1	30	56
7.0	1000	FB37F46K0705°C	K	F4	42.5	36.0	19.0	37.5	1.0	35	245	6.0	18.0	23.1	30	56
8.0	1000	FB37F46K0805°C	K	F4	42.5	36.0	19.0	37.5	1.0	35	280	7.0	16.0	19.1	30	56
9.0	1000	FB37F46K0905°C	K	F4	42.5	36.0	19.0	37.5	1.0	35	315	7.0	14.0	21.9	30	56
10.0	1000	FB37F56K0106°C	K	F5	42.5	38.0	20.0	37.5	1.0	35	350	8.0	12.0	19.5	30	56
10.0	1000	FB37F66K0106°C	K	F6	42.5	40.0	20.0	37.5	1.0	40	400	8.5	12.0	17.3	30	56
12.0	1000	FB37F56K0126°C	K	F5	42.5	38.0	20.0	37.5	1.0	35	420	9.0	10.0	18.5	30	56
15.0	1000	FB37F86K0156°C	K	F8	42.5	44.0	24.0	37.5	1.0	40	600	10.5	8.0	17.0	30	49
20.0	1000	FB37F96K0206°C	K	F9	42.5	45.0	30.0	37.5	1.0	35	700	14.0	6.0	12.8	30	35
22.0	1000	FB37FP6K0226°C	K	FP	42.5	57.0	30.0	37.5	1.0	35	770	14.0	6.0	12.8	30	35
25.0	1000	FB37FP6K0256°C	K	FP	42.5	57.0	30.0	37.5	1.0	35	875	16.0	4.0	14.6	30	35
15.0	1000	FB52G96K0156°C	K	G9	57.5	45.0	25.0	52.5	1.2	18	270	9.0	14.0	13.2	35	30
20.0	1000	FB52G96K0206°C	K	G9	57.5	45.0	25.0	52.5	1.2	18	360	9.0	12.0	15.4	35	30
22.0	1000	FB52G96K0226°C	K	G9	57.5	45.0	25.0	52.5	1.2	18	396	10.0	11.0	13.6	35	30
25.0	1000	FB52GA6K0256°C	K	GA	57.5	45.0	30.0	52.5	1.2	18	450	11.0	10.0	12.4	35	25
30.0	1000	FB52GA6K0306°C	K	GA	57.5	45.0	30.0	52.5	1.2	18	540	12.0	8.0	13.0	35	25
35.0	1000	FB52GC6K0356°C	K	GC	57.5	50.0	35.0	52.5	1.2	18	630	14.0	7.0	10.9	35	20
40.0	1000	FB52GC6K0406°C	K	GC	57.5	50.0	35.0	52.5	1.2	18	720	15.0	6.0	11.1	35	20
					Voltage Vndc 1100V			Voltage Code L								
1.0	1100	FB27E16L0105°C	L	E1	32.0	20.0	11.0	27.5	0.8	80	80	2.5	45.0	53.3	25	150
1.5	1100	FB27E26L0155°C	L	E2	32.0	22.0	13.0	27.5	0.8	80	120	3.5	30.0	40.8	25	120
2.0	1100	FB27EE6L0205°C	L	EE	32.0	24.5	15.0	27.5	0.8	80	160	4.0	25.0	37.5	25	110
2.2	1100	FB27E36L0225°C	L	E3	32.0	28.0	14.0	27.5	0.8	80	176	5.0	16.5	36.4	25	110
3.3	1100	FB27E46L0335°C	L	E4	32.0	28.0	18.0	27.5	0.8	80	264	6.5	11.5	30.9	25	90
4.0	1100	FB27E66L0405°C	L	E6	32.0	33.0	18.0	27.5	0.8	80	320	8.0	10.5	22.3	25	90
5.0	1100	FB27E96L0505°C	L	E9	32.0	37.0	22.0	27.5	0.8	80	400	8.5	9.5	21.9	25	70
8.0	1100	FB37F66L0805°C	L	F6	42.5	40.0	20.0	37.5	1.0	40	320	10.5	14.0	9.7	30	56
10.0	1100	FB37F86L0106°C	L	F8	42.5	44.0	24.0	37.5	1.0	40	400	14.0	9.0	8.5	30	49
					Voltage Vndc1200V			Voltage Code P								
1.0	1200	FB27E16P0105°C	P	E1	32.0	20.0	11.0	27.5	0.8	90	90	4.5	32.5	22.8	25	150
2.0	1200	FB27EE6P0205°C	P	EE	32.0	24.5	15.0	27.5	0.8	90	180	5.0	32.5	18.5	25	110
2.2	1200	FB27E46P0225°C	P	E4	32.0	28.0	18.0	27.5	0.8	90	198	5.5	17.0	29.2	25	90
3.0	1200	FB27E46P0305°C	P	E4	32.0	28.0	18.0	27.5	0.8	90	270	7.0	16.0	19.1	25	90
3.3	1200	FB27E66P0335°C	P	E6	32.0	33.0	18.0	27.5	0.8	90	297	8.0	13.5	17.4	25	90
4.0	1200	FB27EG6P0405°C	P	EG	32.0	31.0	21.0	27.5	0.8	85	340	8.0	12.0	19.5	25	80
5.0	1200	FB27E96P0505°C	P	E9	32.0	37.0	22.0	27.5	0.8	90	450	10.0	12.0	12.5	25	70
5.0	1200	FB27E16P0505°C	P	E1	32.0	35.0	20.0	27.5	0.8	85	425	8.0	10.0	23.4	25	80
5.0	1200	FB37F46P0505°C	P	F4	42.5	36.0	19.0	37.5	1.0	40	200	6.0	18.0	23.1	30	56
5.0	1200	FB37F16P0505°C	P	F1	42.5	33.5	22.0	37.5	1.0	45	225	7.5	15.5	17.2	30	49
6.0	1200	FB37F46P0605°C	P	F4	42.5	36.0	19.0	37.5	1.0	40	240	7.0	15.0	20.4	30	56
6.0	1200	FB37F66P0605°C	P	F6	42.5	40.0	20.0	37.5	1.0	45	270	7.5	15.5	17.2	30	56
7.0	1200	FB37F56P0705°C	P	F5	42.5	38.0	20.0	37.5	1.0	40	280	8.0	13.0	18.0	30	56
8.0	1200	FB37F56P0805°C	P	F5	42.5	38.0	20.0	37.5	1.0	40	320	9.0	11.0	16.8	30	56
9.0	1200	FB37F86P0905°C	P	F8	42.5	44.0	24.0	37.5	1.0	40	360	10.0	10.0	15.0	30	49
10.0	1200	FB37F86P0106°C	P	F8	42.5	44.0	24.0	37.5	1.0	40	400	10.0	9.0	16.7	30	49
12.0	1200	FB37F96P0126°C	P	F9	42.5	45.0	30.0	37.5	1.0	40	480	12.0	8.0	13.0	30	35
15.0	1200	FB37FP6P0156°C	P	FP	42.5	57.0	30.0	37.5	1.0	40	600	14.0	6.0	12.8	30	35
10.0	1200	FB52G96P0106°C	P	G9	57.5	45.0	25.0	52.5	1.2	20	200	8.0	18.0	13.0	35	30
12.0	1200	FB52G96P0126°C	P	G9	57.5	45.0	25.0	52.5	1.2	20	240	8.0	15.0	15.6	35	30
15.0	1200	FB52G96P0156°C	P	G9	57.5	45.0	25.0	52.5	1.2	20	300	9.0	12.0	15.4	35	30
20.0	1200	FB52GA6P0206°C	P	GA	57.5	45.0	30.0	52.5	1.2	20	400	11.0	9.0	13.8	35	25
22.0	1200	FB52GC6P0226°C	P	GC	57.5	50.0	35.0	52.5	1.2	20	440	13.0	8.0	11.1	35	20
25.0	1200	FB52GC6P0256°C	P	GC	57.5	50.0	35.0	52.5	1.2	20	500	14.0	7.0	10.9	35	20

DC FILTERING

FB - Low Profile *RoHS Compliant

CASE CODE

mm

Case Code	Dimensions			
	W ± 0.5	H ± 0.5	T ± 0.5	P1 ± 1.0
	mm	mm	mm	mm
EA	32.0	12.0	24.0	27.5
EB	32.0	15.0	27.0	27.5
FA	42.0	15.0	27.0	37.5
FB	42.0	15.0	33.0	37.5
FC	42.0	18.0	24.0	37.5
FD	42.0	18.0	27.0	37.5
FE	42.0	18.0	39.0	37.5
FF	42.0	24.0	30.0	37.5
FG	42.0	24.0	39.0	37.5
G1	57.5	15.0	33.0	52.5
G2	57.5	15.0	45.0	52.5
G4	57.5	18.0	35.0	52.5
G7	57.5	24.0	39.0	52.5

RATING & PART NUMBER REFERENCE

Cap	Rated Voltage	PN	Voltage Code	Case Code	Dimensions					dv/dt	Peak Current	I _{rms}	ESR 10KHz	R _{th}	ESL	SPQ
					W ± 0.5	H ± 0.5	T ± 0.5	P1 ± 1.0	d ± 0.05							
					mm	mm	mm	mm	mm							
					Voltage V _{ndc} 500V											
					Voltage Code H											
5.0	500	FB27EA8H0505*C	H	EA	32.0	12.0	24.0	27.5	0.8	30	150	4.0	13.0	72.1	25	70
7.0	500	FB27EB8H0705*C	H	EB	32.0	15.0	27.0	27.5	0.8	30	210	5.0	10.0	60.0	25	60
10.0	500	FB37FA8H0106*C	H	FA	42.0	15.0	27.0	37.5	1.0	15	150	5.0	10.0	60.0	30	42
15.0	500	FB37FB8H0156*C	H	FB	42.0	15.0	33.0	37.5	1.0	15	225	6.5	7.0	50.7	30	35
20.0	500	FB52G18H0206*C	H	G1	57.5	15.0	33.0	52.5	1.2	7	140	6.0	9.5	43.9	35	30
30.0	500	FB52G28H0306*C	H	G2	57.5	15.0	45.0	52.5	1.2	7	210	8.5	6.5	31.9	35	15
10.0	500	FB37FC8H0106*C	H	FC	42.0	18.0	24.0	37.5	1.0	15	150	5.0	10.0	60.0	30	49
15.0	500	FB37FD8H0156*C	H	FD	42.0	18.0	27.0	37.5	1.0	15	225	6.5	6.5	54.6	30	42
20.0	500	FB37FE8H0206*C	H	FE	42.0	18.0	39.0	37.5	1.0	15	300	8.5	5.0	41.5	30	28
30.0	500	FB52G48H0306*C	H	G4	57.5	18.0	35.0	52.5	1.2	7	210	8.0	6.5	36.1	35	20
20.0	500	FB37FF8H0206*C	H	FF	42.0	24.0	30.0	37.5	1.0	15	300	8.5	5.0	41.5	30	35
30.0	500	FB37FG8H0306*C	H	FG	42.0	24.0	39.0	37.5	1.0	15	450	11.0	3.5	35.4	30	28
50.0	500	FB52G78H0506*C	H	G7	57.5	24.0	39.0	52.5	1.2	7	350	11.5	4.0	28.4	35	20
					Voltage V _{ndc} 700V											
					Voltage Code A											
3.0	700	FB27EA8A0305*C	A	EA	32.0	12.0	24.0	27.5	0.8	35	105	3.5	14.0	87.5	25	70
5.0	700	FB27EB8A0505*C	A	EB	32.0	15.0	27.0	27.5	0.8	35	175	5.0	8.0	75.0	25	60
7.0	700	FB37FA8A0705*C	A	FA	42.0	15.0	27.0	37.5	1.0	17	119	5.0	15.0	40.0	30	42
10.0	700	FB37FB8A0106*C	A	FB	42.0	15.0	33.0	37.5	1.0	17	170	6.0	11.0	37.9	30	35
15.0	700	FB52G18A0156*C	A	G1	57.5	15.0	33.0	52.5	1.2	8	120	6.0	12.0	34.7	35	30
20.0	700	FB52G28A0206*C	A	G2	57.5	15.0	45.0	52.5	1.2	8	160	8.0	9.0	26.0	35	15
7.0	700	FB37FC8A0705*C	A	FC	42.0	18.0	24.0	37.5	1.0	17	119	5.0	15.0	40.0	30	49
10.0	700	FB37FD8A0106*C	A	FD	42.0	18.0	27.0	37.5	1.0	17	170	6.0	11.0	37.9	30	42
15.0	700	FB37FE8A0156*C	A	FE	42.0	18.0	39.0	37.5	1.0	17	255	8.5	7.0	29.7	30	28
20.0	700	FB52G48A0206*C	A	G4	57.5	18.0	35.0	52.5	1.2	8	160	7.5	9.0	29.6	35	20
15.0	700	FB37FF8A0156*C	A	FF	42.0	24.0	30.0	37.5	1.0	17	255	8.5	7.0	29.7	30	35
20.0	700	FB37FG8A0206*C	A	FG	42.0	24.0	39.0	37.5	1.0	17	340	10.5	6.0	22.7	30	28
30.0	700	FB52G78A0306*C	A	G7	57.5	24.0	39.0	52.5	1.2	8	240	10.5	6.0	22.7	35	20
					Voltage V _{ndc} 1000V											
					Voltage Code K											
2.0	1000	FB27EA8K0205*C	K	EA	32.0	12.0	24.0	27.5	0.8	50	100	3.0	16.0	104.2	25	70
5.0	1000	FB37FA8K0505*C	K	FA	42.0	15.0	27.0	37.5	1.0	25	125	4.5	16.0	46.3	30	42
7.0	1000	FB37FB8K0705*C	K	FB	42.0	15.0	33.0	37.5	1.0	25	175	5.5	12.0	41.3	30	35
10.0	1000	FB52G18K0106*C	K	G1	57.5	15.0	33.0	52.5	1.2	12	120	5.5	13.0	38.1	35	30
15.0	1000	FB52G28K0156*C	K	G2	57.5	15.0	45.0	52.5	1.2	12	180	7.5	9.0	29.6	35	15
3.0	1000	FB37FC8K0305*C	K	FC	42.0	18.0	24.0	37.5	1.0	25	75	3.5	27.0	45.4	30	49

DC FILTERING

FB - Low Profile ***RoHS Compliant**

RATING & PART NUMBER REFERENCE

Cap	Rated Voltage	PN	Voltage Code	Case Code	Dimensions					dv/dt	Peak Current	I _{rms}	ESR 10KHz	R _{th}	ESL	SPQ
					W ± 0.5	H ± 0.5	T ± 0.5	P1 ± 1.0	d ± 0.05							
uF	V				mm	mm	mm	mm	mm	V/us	A	A	mΩ	°C/W	nH	pcs
5.0	1000	FB37FD8K0505*C	K	FD	42.0	18.0	27.0	37.5	1.0	25	125	4.5	16.0	46.3	30	42
7.0	1000	FB37FE8K0705*C	K	FE	42.0	18.0	39.0	37.5	1.0	25	175	6.5	12.0	29.6	30	28
10.0	1000	FB37FE8K0106*C	K	FE	42.0	18.0	39.0	37.5	1.0	25	250	7.5	8.0	33.3	30	28
7.0	1000	FB37FF8K0705*C	K	FF	42.0	24.0	30.0	37.5	1.0	25	175	6.5	12.0	29.6	30	35
10.0	1000	FB37FG8K0106*C	K	FG	42.0	24.0	39.0	37.5	1.0	25	250	8.5	8.0	26.0	30	28
15.0	1000	FB52G78K0156*C	K	G7	57.5	24.0	39.0	52.5	1.2	12	180	8.0	9.0	26.0	35	20
20.0	1000	FB52G78K0206*C	K	G7	57.5	24.0	39.0	52.5	1.2	12	240	9.5	7.0	23.7	35	20

DC FILTERING

FB - THB *RoHS Compliant

CASE CODE

mm

Case Code	Dimensions			
	W ± 0.5	H ± 0.5	T ± 0.5	P1 ± 1.0
	mm	mm	mm	mm
EC	32.0	18.0	9.0	27.5
E1	32.0	20.0	11.0	27.5
E2	32.0	22.0	13.0	27.5
EE	32.0	24.5	15.0	27.5
E3	32.0	28.0	14.0	27.5
E4	32.0	28.0	18.0	27.5
E6	32.0	33.0	18.0	27.5
E9	32.0	37.0	22.0	27.5
FH	42.5	18.0	24.0	37.5
F3	42.5	32.0	19.0	37.5
FI	42.5	33.5	22.0	37.5
F6	42.5	40.0	20.0	37.5
F8	42.5	44.0	24.0	37.5
F9	42.5	45.0	30.0	37.5

RATING & PART NUMBER REFERENCE

Cap uF	Rated Voltage V	PN	Voltage Code	Case Code	Dimensions					dv/dt V/us	Peak Current A	I _{rms} A	ESR 10KHz mΩ	R _{th} °C/W	ESL nH	SPQ pcs
					W ± 0.5	H ± 0.5	T ± 0.5	P1 ± 1.0	d ± 0.05							
					mm	mm	mm	mm	mm							
					Voltage V_{ndc} 450V											
										Voltage Code I						
1.0	450	FB27EC7I0105°C	I	EC	32.0	18.0	9.0	27.5	0.8	60	60	2.5	45.0	53.3	25	180
2.0	450	FB27EC7I0205°C	I	EC	32.0	18.0	9.0	27.5	0.8	60	120	3.0	30.0	55.6	25	180
3.0	450	FB27E17I0305°C	I	E1	32.0	20.0	11.0	27.5	0.8	60	180	4.0	20.0	46.9	25	150
4.0	450	FB27E17I0405°C	I	E1	32.0	20.0	11.0	27.5	0.8	60	240	4.0	18.0	52.1	25	150
5.0	450	FB27E17I0505°C	I	E1	32.0	20.0	11.0	27.5	0.8	60	300	5.0	12.0	50.0	25	150
5.0	450	FB27E27I0505°C	I	E2	32.0	22.0	13.0	27.5	0.8	60	300	5.5	11.0	45.1	25	120
10.0	450	FB27E37I0106°C	I	E3	32.0	28.0	14.0	27.5	0.8	60	600	7.5	8.5	31.4	25	110
10.0	450	FB27E47I0106°C	I	E4	32.0	28.0	18.0	27.5	0.8	60	600	9.0	8.0	23.1	25	90
12.0	450	FB27E67I0126°C	I	E6	32.0	33.0	18.0	27.5	0.8	60	720	10.0	7.0	21.4	25	90
15.0	450	FB27E97I0156°C	I	E9	32.0	37.0	22.0	27.5	0.8	60	900	11.5	6.0	18.9	25	70
15.0	450	FB37FH7I0156°C	I	FH	42.5	18.0	24.0	37.5	1.0	30	450	9.5	8.5	19.6	30	49
18.0	450	FB27E97I0186°C	I	E9	32.0	37.0	22.0	27.5	0.8	60	1080	10.0	6.0	25.0	25	70
20.0	450	FB27E97I0206°C	I	E9	32.0	37.0	22.0	27.5	0.8	60	1200	11.0	5.0	24.8	25	70
22.0	450	FB27E97I0226°C	I	E9	32.0	37.0	22.0	27.5	0.8	60	1320	12.5	5.0	19.2	25	70
					Voltage V_{ndc} 550V											
										Voltage Code J						
3.0	550	FB27E17J0305°C	J	E1	32.0	20.0	11.0	27.5	0.8	60	180	4.0	28.0	33.5	25	150
5.0	550	FB27E27J0505°C	J	E2	32.0	22.0	13.0	27.5	0.8	60	300	6.0	14.0	29.8	25	120
8.0	550	FB27E37J0805°C	J	E3	32.0	28.0	14.0	27.5	0.8	60	480	8.5	12.5	16.6	25	110
10.0	550	FB27E67J0106°C	J	E6	32.0	33.0	18.0	27.5	0.8	60	600	10.0	8.0	18.8	25	90
15.0	550	FB27E97J0156°C	J	E9	32.0	37.0	22.0	27.5	0.8	60	900	12.0	6.5	16.0	25	70
15.0	550	FB37FH7J0156°C	J	FH	42.5	18.0	24.0	37.5	1.0	60	900	10.5	6.5	20.9	30	49
					Voltage V_{ndc} 600V											
										Voltage Code Q						
3.0	600	FB27E17Q0305°C	Q	E1	32.0	20.0	11.0	27.5	0.8	60	180	4.0	28.0	33.5	25	150
4.0	600	FB27E17Q0405°C	Q	E1	32.0	20.0	11.0	27.5	0.8	60	240	5.0	26.0	23.1	25	150
5.0	600	FB27E37Q0505°C	Q	E3	32.0	28.0	14.0	27.5	0.8	60	300	6.0	14.5	28.7	25	110
8.0	600	FB27E37Q0805°C	Q	E3	32.0	28.0	14.0	27.5	0.8	60	480	7.5	12.0	22.2	25	110
10.0	600	FB27E67Q0106°C	Q	E6	32.0	33.0	18.0	27.5	0.8	60	600	8.5	7.5	27.7	25	90
12.0	600	FB27E67Q0126°C	Q	E6	32.0	33.0	18.0	27.5	0.8	60	720	9.5	7.5	22.2	25	90
12.0	600	FB37FH7Q0126°C	Q	FH	42.5	18.0	24.0	37.5	1.0	35	420	8.0	9.5	24.7	30	49
15.0	600	FB27E97Q0156°C	Q	E9	32.0	37.0	22.0	27.5	0.8	60	900	10.5	7.5	18.1	25	70
15.0	600	FB37FH7Q0156°C	Q	FH	42.5	18.0	24.0	37.5	1.0	35	525	12.0	6.0	17.4	30	49

DC FILTERING

FB - THB *RoHS Compliant

RATING & PART NUMBER REFERENCE

Cap	Rated Voltage	PN	Voltage Code	Case Code	Dimensions					dv/dt	Peak Current	I _{rms}	ESR 10KHz	R _{th}	ESL	SPQ
					W	H	T	P1	d							
					± 0.5	± 0.5	± 0.5	± 1.0	± 0.05							
uF	V				mm	mm	mm	mm	mm	V/us	A	A	mΩ	°C/W	nH	pcs
Voltage V_{ndc} 700V																
Voltage Code A																
1.0	700	FB27EC7A0105*C	A	EC	32.0	18.0	9.0	27.5	0.8	60	60	2.5	54.0	44.4	25	180
2.0	700	FB27EC7A0205*C	A	EC	32.0	18.0	9.0	27.5	0.8	60	120	3.0	35.0	47.6	25	180
3.0	700	FB27E17A0305*C	A	E1	32.0	20.0	11.0	27.5	0.8	60	180	4.5	28.0	26.5	25	150
3.3	700	FB27E37A0335*C	A	E3	32.0	28.0	14.0	27.5	0.8	60	198	5.5	26.0	19.1	25	110
5.0	700	FB27E37A0505*C	A	E3	32.0	28.0	14.0	27.5	0.8	60	300	6.0	14.0	29.8	25	110
6.0	700	FB27E47A0605*C	A	E4	32.0	28.0	18.0	27.5	0.8	60	360	6.0	14.0	29.8	25	90
8.0	700	FB27E67A0805*C	A	E6	32.0	33.0	18.0	27.5	0.8	60	480	9.0	10.0	18.5	25	90
10.0	700	FB27E67A0106*C	A	E6	32.0	33.0	18.0	27.5	0.8	60	600	10.0	7.0	21.4	25	90
10.0	700	FB27E97A0106*C	A	E9	32.0	37.0	22.0	27.5	0.8	60	600	12.0	6.5	16.0	25	70
10.0	700	FB37FH7A0106*C	A	FH	42.5	18.0	24.0	37.5	1.0	35	350	11.5	7.5	15.1	30	49
12.0	700	FB27E97A0126*C	A	E9	32.0	37.0	22.0	27.5	0.8	60	720	12.5	6.0	16.0	25	70
12.0	700	FB37FH7A0126*C	A	FH	42.5	18.0	24.0	37.5	1.0	35	420	12.0	7.0	14.9	30	49
15.0	700	FB37FI7A0156*C	A	FI	42.5	33.5	22.0	37.5	1.0	35	525	9.0	9.0	20.6	30	49
Voltage V_{ndc} 800V																
Voltage Code B																
1.0	800	FB27EC7B0105*C	B	EC	32.0	18.0	9.0	27.5	0.8	60	60	2.0	62.0	60.5	25	180
2.0	800	FB27E17B0205*C	B	E1	32.0	20.0	11.0	27.5	0.8	60	120	3.5	31.0	39.5	25	150
3.0	800	FB27E27B0305*C	B	E2	32.0	22.0	13.0	27.5	0.8	60	180	4.5	21.0	35.3	25	120
3.3	800	FB27E37B0335*C	B	E3	32.0	28.0	14.0	27.5	0.8	60	198	4.0	25.0	37.5	25	110
5.0	800	FB27E37B0505*C	B	E3	32.0	28.0	14.0	27.5	0.8	60	300	6.0	12.0	34.7	25	110
6.0	800	FB27E47B0605*C	B	E4	32.0	28.0	18.0	27.5	0.8	60	360	7.5	10.5	25.4	25	90
8.0	800	FB27E67B0805*C	B	E6	32.0	33.0	18.0	27.5	0.8	60	480	9.5	9.5	17.5	25	90
9.0	800	FB27E67B0905*C	B	E6	32.0	33.0	18.0	27.5	0.8	60	540	10.0	8.5	17.6	25	90
10.0	800	FB27E97B0106*C	B	E9	32.0	37.0	22.0	27.5	0.8	60	600	11.5	9.5	11.9	25	70
10.0	800	FB37F37B0106*C	B	F3	42.5	32.0	19.0	37.5	1.0	35	350	8.0	12.5	18.8	30	56
Voltage V_{ndc} 900V																
Voltage Code C																
1.0	900	FB27EC7C0105*C	C	EC	32.0	18.0	9.0	27.5	0.8	60	60	2.0	63.0	59.5	25	180
2.0	900	FB27E17C0205*C	C	E1	32.0	20.0	11.0	27.5	0.8	60	120	3.0	25.0	66.7	25	150
3.0	900	FB27E27C0305*C	C	E2	32.0	22.0	13.0	27.5	0.8	60	180	5.0	18.5	32.4	25	120
3.3	900	FB27EE7C0335*C	C	EE	32.0	24.5	15.0	27.5	0.8	60	198	5.0	18.5	32.4	25	110
5.0	900	FB27E47C0505*C	C	E4	32.0	28.0	18.0	27.5	0.8	60	300	7.0	12.5	24.5	25	90
6.0	900	FB27E67C0605*C	C	E6	32.0	33.0	18.0	27.5	0.8	60	360	8.0	11.0	21.3	25	90
8.0	900	FB27E97C0805*C	C	E9	32.0	37.0	22.0	27.5	0.8	60	480	10.5	10.0	13.6	25	70
10.0	900	FB27E97C0106*C	C	E9	32.0	37.0	22.0	27.5	0.8	60	600	12.0	10.0	10.4	25	70
10.0	900	FB37F67C0106*C	C	F6	42.5	40.0	20.0	37.5	1.0	35	350	8.5	12.0	17.3	30	56
15.0	900	FB37F87C0156*C	C	F8	42.5	44.0	24.0	37.5	1.0	35	525	10.5	8.0	17.0	30	49
18.0	900	FB37F87C0186*C	C	F8	42.5	44.0	24.0	37.5	1.0	35	630	10.5	8.0	17.0	30	49
20.0	900	FB37F97C0206*C	C	F9	42.5	45.0	30.0	37.5	1.0	35	700	14.0	6.0	12.8	30	35
Voltage V_{ndc} 1000V																
Voltage Code K																
1.0	1000	FB27E17K0105*C	K	E1	32.0	20.0	11.0	27.5	0.8	80	80	2.5	45.0	53.3	25	150
2.0	1000	FB27E27K0205*C	K	E2	32.0	22.0	13.0	27.5	0.8	80	160	3.5	30.0	40.8	25	120
3.0	1000	FB27E7K0305*C	K	EE	32.0	24.5	15.0	27.5	0.8	80	240	5.0	25.0	24.0	25	110
5.0	1000	FB27E67K0505*C	K	E6	32.0	33.0	18.0	27.5	0.8	80	400	8.0	14.0	16.7	25	90
8.0	1000	FB27E97K0805*C	K	E9	32.0	37.0	22.0	27.5	0.8	80	640	10.0	12.0	12.5	25	70
10.0	1000	FB37F67K0106*C	K	F6	42.5	40.0	20.0	37.5	1.0	40	400	8.5	12.0	17.3	30	56
15.0	1000	FB37F87K0156*C	K	F8	42.5	44.0	24.0	37.5	1.0	40	600	10.5	8.0	17.0	30	49
Voltage V_{ndc} 1100V																
Voltage Code L																
1	1100	FB27E17L0105*C	L	E1	32.0	20.0	11.0	27.5	0.8	80	80	2.5	45.0	53.3	25	150
1.5	1100	FB27E27L0155*C	L	E2	32.0	22.0	13.0	27.5	0.8	80	120	3.5	30.0	40.8	25	120
2.0	1100	FB27EE7L0205*C	L	EE	32.0	24.5	15.0	27.5	0.8	80	160	4.0	25.0	37.5	25	110
2.2	1100	FB27E37L0225*C	L	E3	32.0	28.0	14.0	27.5	0.8	80	176	5.0	16.5	36.4	25	110
3.3	1100	FB27E47L0335*C	L	E4	32.0	28.0	18.0	27.5	0.8	80	264	6.5	11.5	30.9	25	90
4.0	1100	FB27E67L0405*C	L	E6	32.0	33.0	18.0	27.5	0.8	80	320	8.0	10.5	22.3	25	90
5.0	1100	FB27E97L0505*C	L	E9	32.0	37.0	22.0	27.5	0.8	80	400	8.5	9.5	21.9	25	70
8.0	1100	FB37F67L0805*C	L	F6	42.5	40.0	20.0	37.5	1.0	40	320	10.5	14.0	9.7	30	56
10.0	1100	FB37F87L0106*C	L	F8	42.5	44.0	24.0	37.5	1.0	40	400	14.0	9.0	8.5	30	49

DC FILTERING

FB - THB *RoHS Compliant

RATING & PART NUMBER REFERENCE

Cap	Rated Voltage	PN	Voltage Code	Case Code	Dimensions					dv/dt	Peak Current	I _{rms}	ESR 10KHz	R _{th}	ESL	SPQ	
					W ± 0.5	H ± 0.5	T ± 0.5	P1 ± 1.0	d ± 0.05								
µF	V				mm	mm	mm	mm	mm	V/us	A	A	mΩ	°C/W	nH	pcs	
					Voltage V _{ndc} 1200V			Voltage Code P									
1.0	1200	FB27E17P0105*C	P	E1	32.0	20.0	11.0	27.5	0.8	90	90	4.5	32.5	22.8	25	150	
2.0	1200	FB27EE7P0205*C	P	EE	32.0	24.5	15.0	27.5	0.8	90	180	5.0	32.5	18.5	25	110	
2.2	1200	FB27E47P0225*C	P	E4	32.0	28.0	18.0	27.5	0.8	90	198	5.5	17.0	29.2	25	90	
3.0	1200	FB27E47P0305*C	P	E4	32.0	28.0	18.0	27.5	0.8	90	270	7.0	16.0	19.1	25	90	
3.3	1200	FB27E67P0335*C	P	E6	32.0	33.0	18.0	27.5	0.8	90	297	8.0	13.5	17.4	25	90	
5.0	1200	FB27E97P0505*C	P	E9	32.0	37.0	22.0	27.5	0.8	90	450	10.0	12.0	12.5	25	70	
5.0	1200	FB37F17P0505*C	P	F1	42.5	33.5	22.0	37.5	1.0	45	225	7.5	15.5	17.2	30	49	
6.0	1200	FB37F67P0605*C	P	F6	42.5	40.0	20.0	37.5	1.0	45	270	7.5	15.5	17.2	30	56	

Архангельск (8182)63-90-72
 Астана (7172)727-132
 Астрахань (8512)99-46-04
 Барнаул (3852)73-04-60
 Белгород (4722)40-23-64
 Брянск (4832)59-03-52
 Владивосток (423)249-28-31
 Волгоград (844)278-03-48
 Вологда (8172)26-41-59
 Воронеж (473)204-51-73
 Екатеринбург (343)384-55-89
 Иваново (4932)77-34-06

Ижевск (3412)26-03-58
 Иркутск (395)279-98-46
 Казань (843)206-01-48
 Калининград (4012)72-03-81
 Калуга (4842)92-23-67
 Кемерово (3842)65-04-62
 Киров (8332)68-02-04
 Краснодар (861)203-40-90
 Красноярск (391)204-63-61
 Курск (4712)77-13-04
 Липецк (4742)52-20-81
 Киргизия (996)312-96-26-47

Магнитогорск (3519)55-03-13
 Москва (495)268-04-70
 Мурманск (8152)59-64-93
 Набережные Челны (8552)20-53-41
 Нижний Новгород (831)429-08-12
 Новокузнецк (3843)20-46-81
 Новосибирск (383)227-86-73
 Омск (3812)21-46-40
 Орел (4862)44-53-42
 Оренбург (3532)37-68-04
 Пенза (8412)22-31-16
 Россия (495)268-04-70

Пермь (342)205-81-47
 Ростов-на-Дону (863)308-18-15
 Рязань (4912)46-61-64
 Самара (846)206-03-16
 Санкт-Петербург (812)309-46-40
 Саратов (845)249-38-78
 Севастополь (8692)22-31-93
 Симферополь (3652)67-13-56
 Смоленск (4812)29-41-54
 Сочи (862)225-72-31
 Ставрополь (8652)20-65-13
 Казахстан (772)734-952-31

Сургут (3462)77-98-35
 Тверь (4822)63-31-35
 Томск (3822)98-41-53
 Тула (4872)74-02-29
 Тюмень (3452)66-21-18
 Ульяновск (8422)24-23-59
 Уфа (347)229-48-12
 Хабаровск (4212)92-98-04
 Челябинск (351)202-03-61
 Череповец (8202)49-02-64
 Ярославль (4852)69-52-93

<https://avx.nt-rt.ru/> || axv@nt-rt